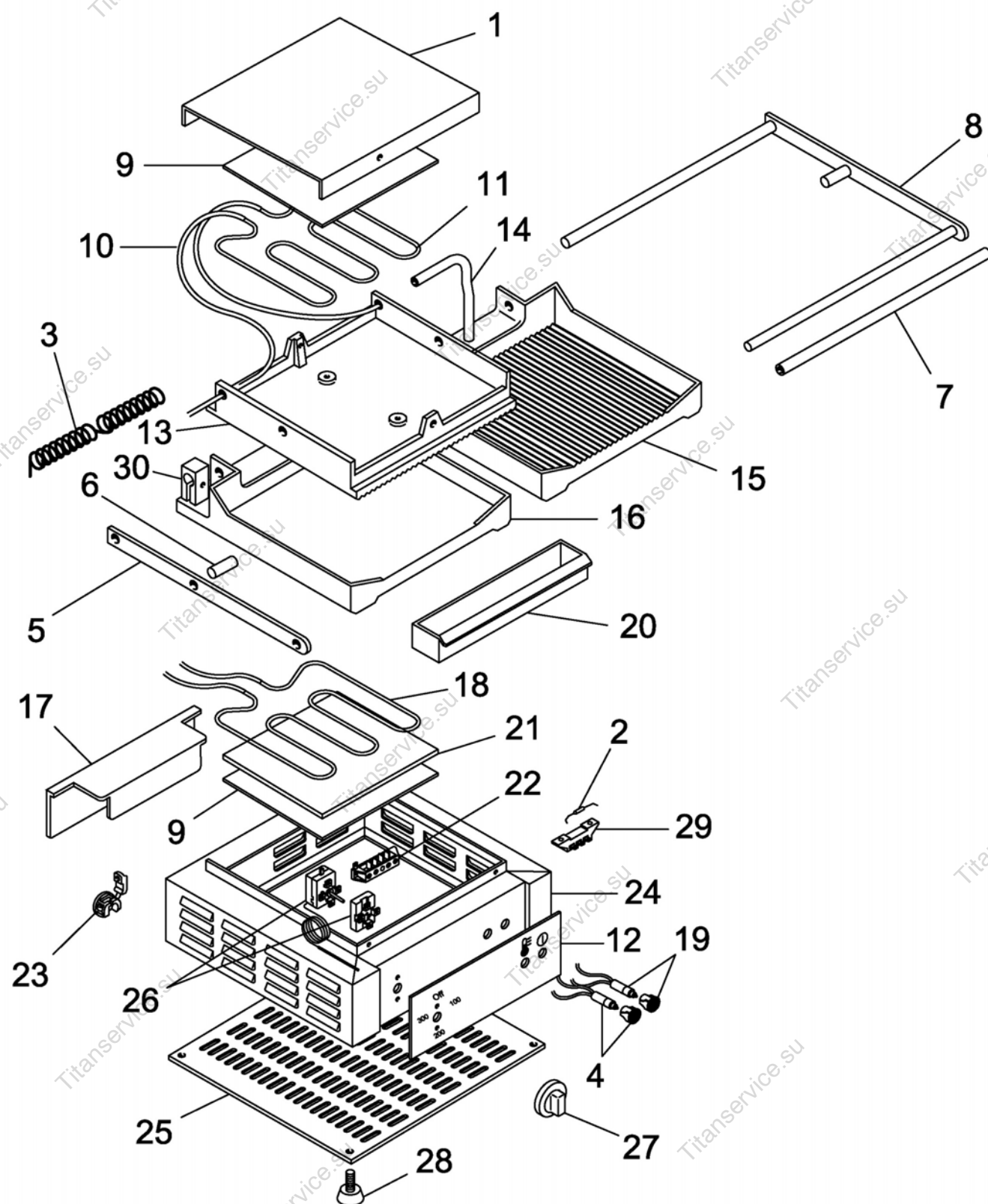


PE25-35R-L



PE25-35R-L

| Pos. Ref. | Codice Code | Caratteristiche Features | Descrizione Description | |
|--------------|----------------|-----------------------------|----------------------------|---------------------|
| 1 | CO4400 | (PE25R-L) | Copertura | Covering |
| 1 | CO4429 | (PE35R-L) | Copertura | Covering |
| 2 | CO4401 | ● | Fus bile | Fuse |
| 3 | CO4402 | (PE25R-L) | Molla | Spring |
| 3 | CO4430 | (PE35R-L) | Molla | Spring |
| 4 | CO1948 | ● 230V 2W (orange) | Lampada | Lamp |
| 5 | CO4403 | | Leva | Lever |
| 6 | CO4404 | | Perno | Pivot |
| 7 | CO4405 | (PE25R-L) | Maniglia | Handle |
| 7 | CO4428 | (PE35R-L) | Maniglia | Handle |
| 8 | CO4431 | Assembly (PE25R-L) | Perno | Pivot |
| 8 | CO0784 | Assembly (PE35R-L) | Perno | Pivot |
| 10 | CO4408 | | Tubo | Tube |
| 11 | CO4410 | 230V/1N/50-60Hz (PE25R-L) | Resistenza | Resistance |
| 11 | CO4433 | 230V/1N/50-60Hz (PE35R-L) | Resistenza | Resistance |
| 12 | SL3613 | PE25R-L | Etichetta | Label |
| 12 | SL3614 | PE35R-L | Etichetta | Label |
| 13 | CO4411 | Cast iron (PE25R-L) | Piastra | Plate |
| 13 | CO4435 | Cast iron (PE35R-L) | Piastra | Plate |
| 14 | CO4412 | | Raccordo | Nipple |
| 15 | CO4413 | Cast iron - grooved (PE25R) | Piastra | Plate |
| 15 | CO4436 | Cast iron - grooved (PE35R) | Piastra | Plate |
| 16 | CO4418 | Cast iron - smooth (PE25L) | Piastra | Plate |
| 16 | CO4441 | Cast iron - smooth (PE35L) | Piastra | Plate |
| 17 | CO4437 | | Protezione | Protection |
| 18 | CO4415 | 230V/1N/50-60Hz (PE25R-L) | Resistenza | Resistance |
| 18 | CO4438 | 230V/1N/50-60Hz (PE35R-L) | Resistenza | Resistance |
| 19 | 32W2970 | ● 230V 2W (green) | Lampada | Lamp |
| 20 | CO4439 | | Cassetto | Tray |
| 21 | CO4417 | (PE25R-L) | Isolante | Insulating material |
| 21 | CO4440 | (PE35R-L) | Isolante | Insulating material |
| 22 | CO4425 | | Morsettiera | Terminal box |
| 23 | 32D0360 | | Pressacavo | Cable clamp |
| 26 | CO4421 | ● | Termostato | Thermostat |
| 27 | SL3550 | | Pomello | Knob |
| 28 | CO4423 | | Piedino | Foot |
| 29 | CO4424 | | Morsettiera | Terminal box |
| 30 | CO4462 | | Blocchetto | Pad |

(*) : fuori produzione / out of production

● : ricambio consigliato / spare part suggested