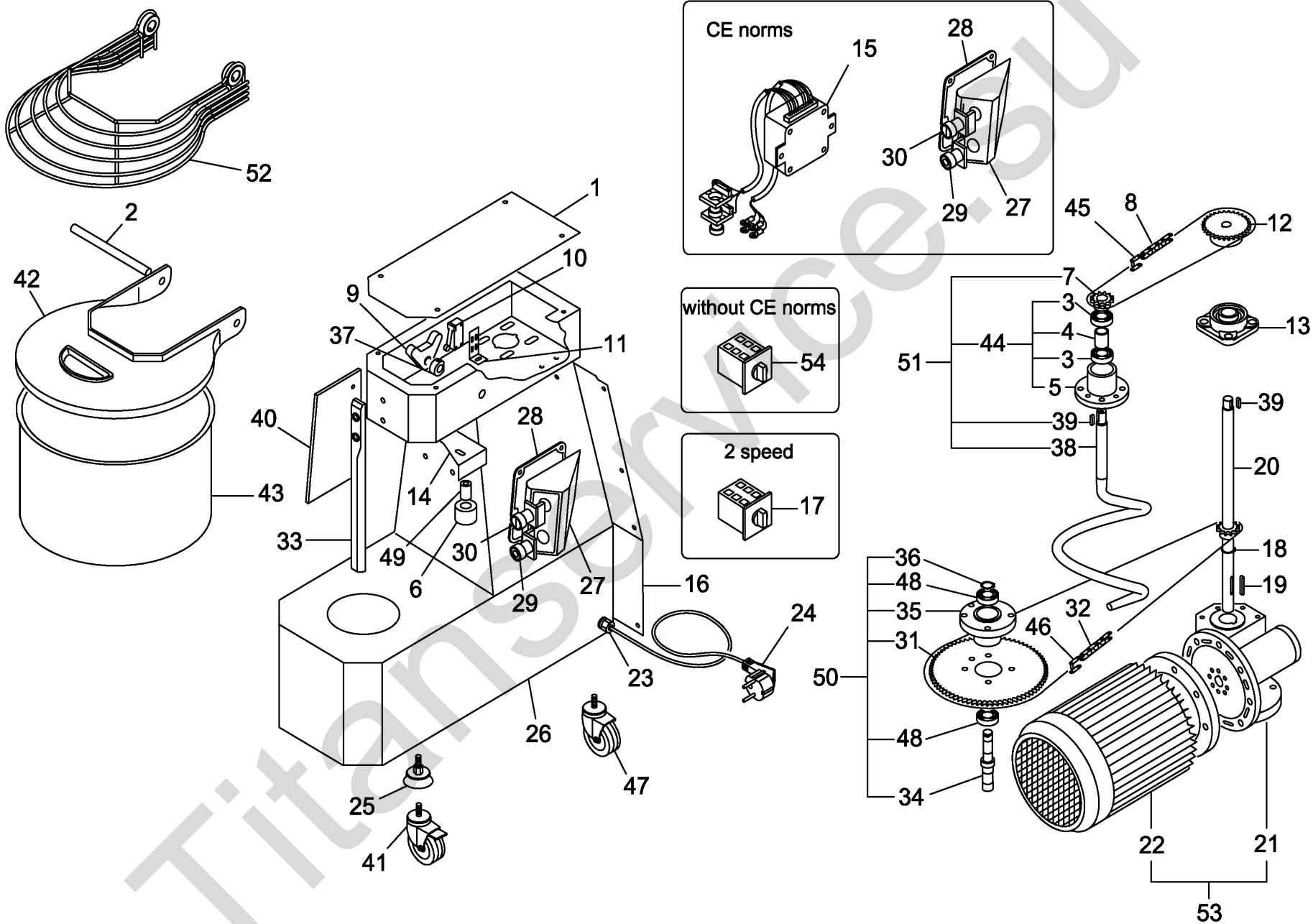


| Pos. Ref. | Codice Code | Caratteristiche Features             | Descrizione Description                         |
|-----------|-------------|--------------------------------------|---|
| 1         | SL3250      | (7SN)                                | Coperchio Cover                                 |
| 1         | SL0002      | (12-18SN)                            | Coperchio Cover                                 |
| 2         | SL1110      | (7SN)                                | Perno Pivot                                     |
| 2         | SL0021      | (12-18SN)                            | Perno Pivot                                     |
| 3         | SL0131      | 6203 2RS                             | Cuscinetto Bearing                              |
| 4         | SL0020      |                                      | Distanziale Spacer                              |
| 5         | SL0022      |                                      | Supporto Support                                |
| 6         | SL2655      | ● (12-18SN)                          | Ruota Wheel                                     |
| 7         | SL0024      | 3/8"x7/32" Z=15                      | Pignone Pinion                                  |
| 8         | SL1111      | ● 3/8"x7/32" (7SN)                   | Catena Chain                                    |
| 8         | SL0025      | ● 3/8"x7/32" (12SN)                  | Catena Chain                                    |
| 8         | SL0026      | ● 3/8"x7/32" (18SN)                  | Catena Chain                                    |
| 9         | SL0035      | (7-12SN)                             | Battuta Stop                                    |
| 9         | SA3300      | (18SN)                               | Battuta Stop                                    |
| 10        | SL0885      | ● CE norms                           | Microinterruttore Microswitch                   |
| 10        | SL2701      | without CE norms                     | Microinterruttore Microswitch                   |
| 11        | SL0397      | CE norms                             | Staffa Bracket                                  |
| 12        | SL0030      | 3/8"x7/32" Z=29                      | Pignone Pinion                                  |
| 13        | SL0032      | UCF204                               | Supporto Support                                |
| 14        | SL2602      | (12)                                 | Staffa Bracket                                  |
| 14        | SL2603      | (18)                                 | Staffa Bracket                                  |
| 15        | SA1210      | ● 400V/3Ph/50Hz                      | Impianto elettrico Electric installation        |
| 15        | SA1220      | ● 230V/1Ph/50Hz                      | Impianto elettrico Electric installation        |
| 16        | SL3251      | (7SN)                                | Coperchio Cover                                 |
| 16        | SL2845      | (12-18SN)                            | Coperchio Cover                                 |
| 17        | SL2743      | 2 speed - CE norms (12-18SN)         | Commutatore di velocità Speed changeover switch |
| 17        | SL3760      | 2 speed - without CE norms (12-18SN) | Commutatore di velocità Speed changeover switch |
| 18        | SL3486      | ø18 (7SN)                            | Seeger Seeger                                   |
| 18        | SL1616      | ø25 (12-18SN)                        | Seeger Seeger                                   |
| 19        | SL3130      | 6x6x30 (7SN)                         | Linguetta Key                                   |
| 19        | SL3410      | 8x7x40 (12-18SN)                     | Linguetta Key                                   |
| 20        | SA1018      | (7SN)                                | Albero Shaft                                    |
| 20        | SA1019      | (12-18SN)                            | Albero Shaft                                    |
| 21        | SL3185      | (7SN)                                | Riduttore Gear box                              |
| 21        | SL3186      | (12-18SN)                            | Riduttore Gear box                              |
| 22        | SL3336      | 400V/3Ph/50Hz (7SN)                  | Motore Motor                                    |
| 22        | SL3211      | 230V/1Ph/50Hz (7SN)                  | Motore Motor                                    |
| 22        | SL3309      | 400V/3Ph/50Hz (12-18SN)              | Motore Motor                                    |
| 22        | SL3212      | 230V/1Ph/50Hz (12-18SN)              | Motore Motor                                    |
| 22        | SL3313      | 400V/3Ph/50Hz (2 speed - 12-18SN)    | Motore Motor                                    |
| 23        | SL1668      | PG11                                 | Pressacavo Cable clamp                          |
| 24        | SL1841      | 3Ph+Gnd                              | Cavo elettrico Electric cable                   |
| 24        | SL1671      | 1Ph+N+Gnd                            | Cavo elettrico Electric cable                   |
| 25        | SL3361      | ●                                    | Piedino Foot                                    |
| 26        | SL3249      | (7SN)                                | Base Base                                       |
| 26        | SL3354      | (12SN)                               | Base Base                                       |
| 26        | SL3355      | (18SN)                               | Base Base                                       |
| 27        | SL0937      | (12-18SN)                            | Scatola Box                                     |
| 28        | SL0396      | (12-18SN)                            | Guarnizione Gasket                              |
| 29        | SL0807      | ● Stop                               | Pulsante Push button                            |
| 30        | SL1049      | ● Start                              | Pulsante Push button                            |
| 31        | SL1117      | 8x3 Z=76 (7SN)                       | Corona Crown                                    |
| 31        | SL0057      | 8x3 Z=85 (12-18SN)                   | Corona Crown                                    |
| 32        | SL3364      | ● 8x3 (7SN)                          | Catena Chain                                    |
| 32        | SL0058      | ● 8x3 (12-18SN)                      | Catena Chain                                    |
| 33        | SL3370      |                                      | Asta Rod  |
| 34        | SL0014      |                                      | Albero Shaft                                    |
| 35        | SL0016      |                                      | Supporto Support                                |
| 36        | SL0017      | ø17                                  | Seeger Seeger                                   |
| 37        | SL0036      |                                      | Camma Cam                                       |
| 38        | SL1107      | (7SN)                                | Spirale Spiral                                  |
| 38        | SL0011      | (12-18SN)                            | Spirale Spiral                                  |
| 39        | SL0010      | 5x5x20                               | Linguetta Key                                   |
| 40        | SL1445      | (7SN)                                | Protezione Protection                           |
| 40        | SL2638      | (12-18SN)                            | Protezione Protection                           |
| 41        | SL3483      | ø95 M10x30                           | Ruota girevole Revolving wheel                  |
| 42        | SA1004      | Plastic (12SN)                       | Coperchio Cover                                 |
| 42        | SA1005      | Plastic (18SN)                       | Coperchio Cover                                 |
| 43        | SL1106      | ● (7SN)                              | Pentola Pan                                     |
| 43        | SL0008      | ● (12SN)                             | Pentola Pan                                     |
| 43        | SL0009      | ● (18SN)                             | Pentola Pan                                     |

(\*) : fuori produzione / out of production

● : ricambio consigliato / spare part suggested



| Pos. Ref. | Codice Code | Caratteristiche Features          | Descrizione Description    |
|-----------|-------------|-----------------------------------|----------------------------|
| 44        | SA4000      | Assembly                          | Supporto Support           |
| 45        | SL1629      | ● 3/8"x7/32"                      | Giunto Joint               |
| 46        | SL1545      | ● 8x3                             | Giunto Joint               |
| 47        | SL3482      | ø95 M10x30                        | Ruota fissa Fixed wheel    |
| 48        | SL0015      | 6203 2RS                          | Cuscinetto Bearing         |
| 49        | SL1090      |                                   | Distanziale Spacer         |
| 50        | SA1900      | Assembly                          | Supporto Support           |
| 51        | SA1032      | Assembly (7SN)                    | Supporto Support           |
| 51        | SA1033      | Assembly (12-18SN)                | Supporto Support           |
| 52        | SL3150      | Stainless steel (7SN)             | Coperchio Cover            |
| 52        | SL3417      | Stainless steel (12SN)            | Coperchio Cover            |
| 52        | SL3418      | Stainless steel (18SN)            | Coperchio Cover            |
| 53        | SL3290      | 400V/3Ph/50Hz (7SN)               | Motoriduttore Geared motor |
| 53        | SL3289      | 230V/1Ph/50Hz (7SN)               | Motoriduttore Geared motor |
| 53        | SL3292      | 400V/3Ph/50Hz(12-18SN)            | Motoriduttore Geared motor |
| 53        | SL3291      | 230V/1Ph/50Hz(12-18SN)            | Motoriduttore Geared motor |
| 53        | SL3306      | 400V/3Ph/50Hz (2 speed - 12-18SN) | Motoriduttore Geared motor |
| 54        | SL0054      |                                   | Interruttore Switch        |

(\*) : fuori produzione / out of production

● : ricambio consigliato / spare part suggested