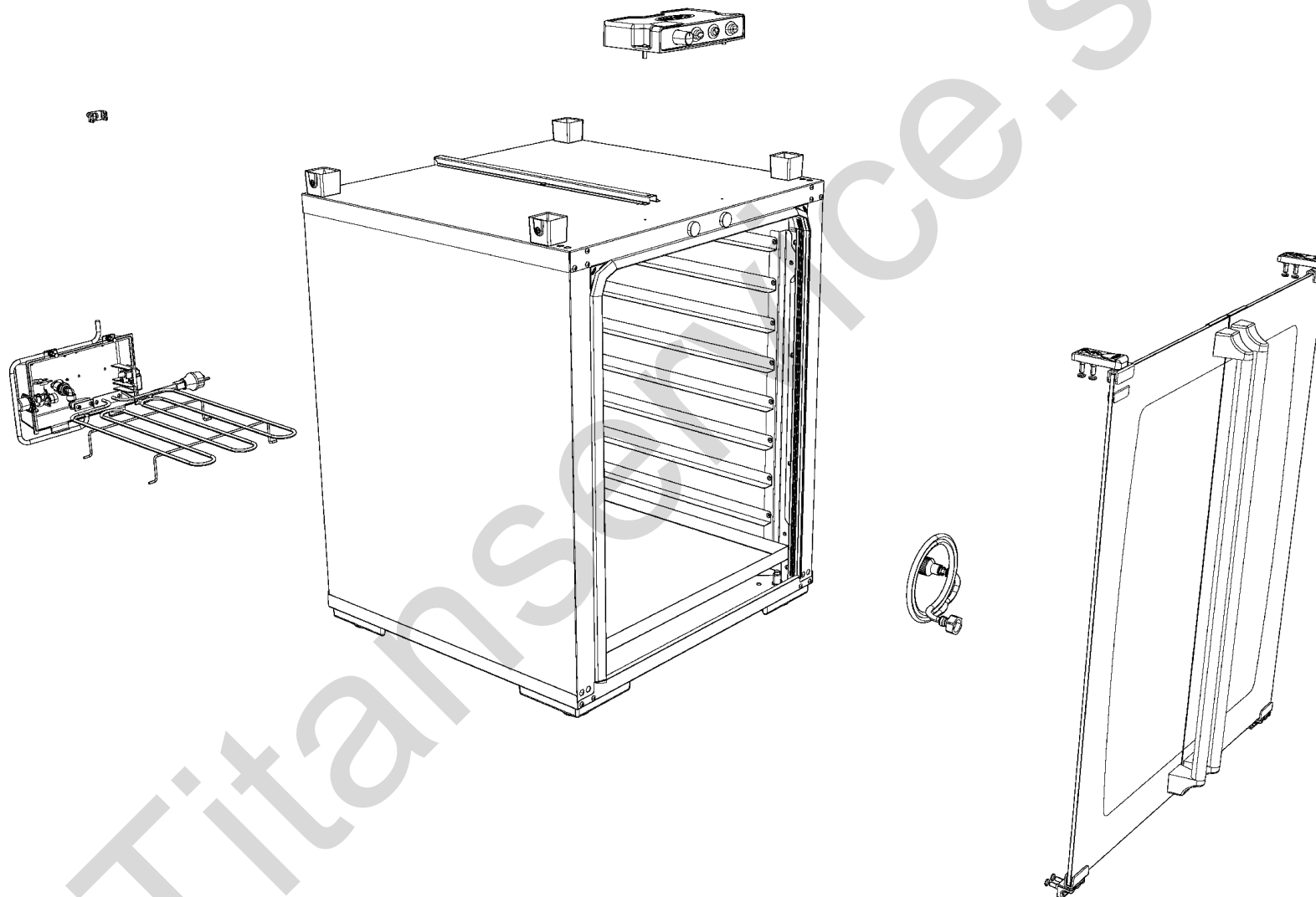
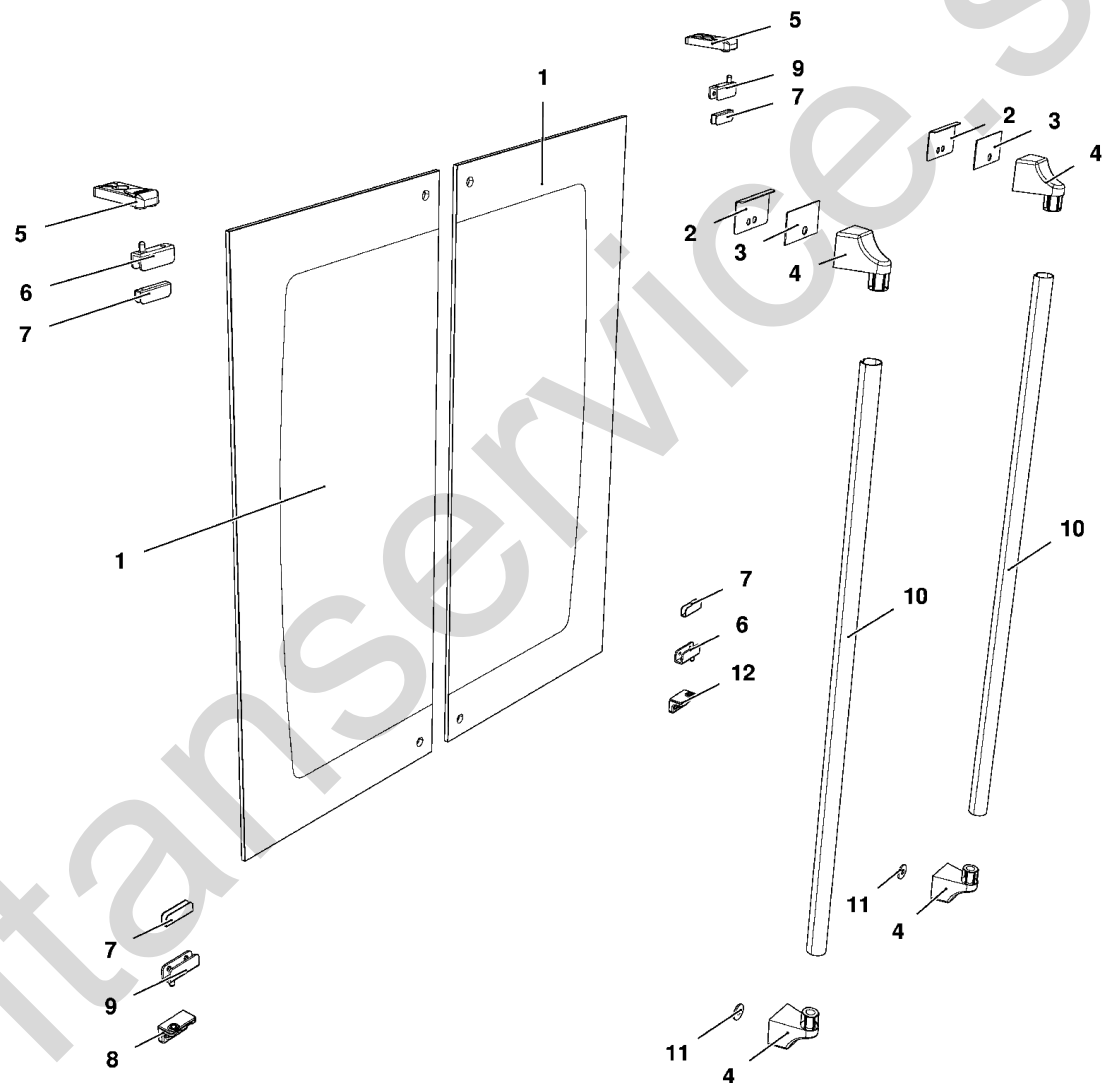
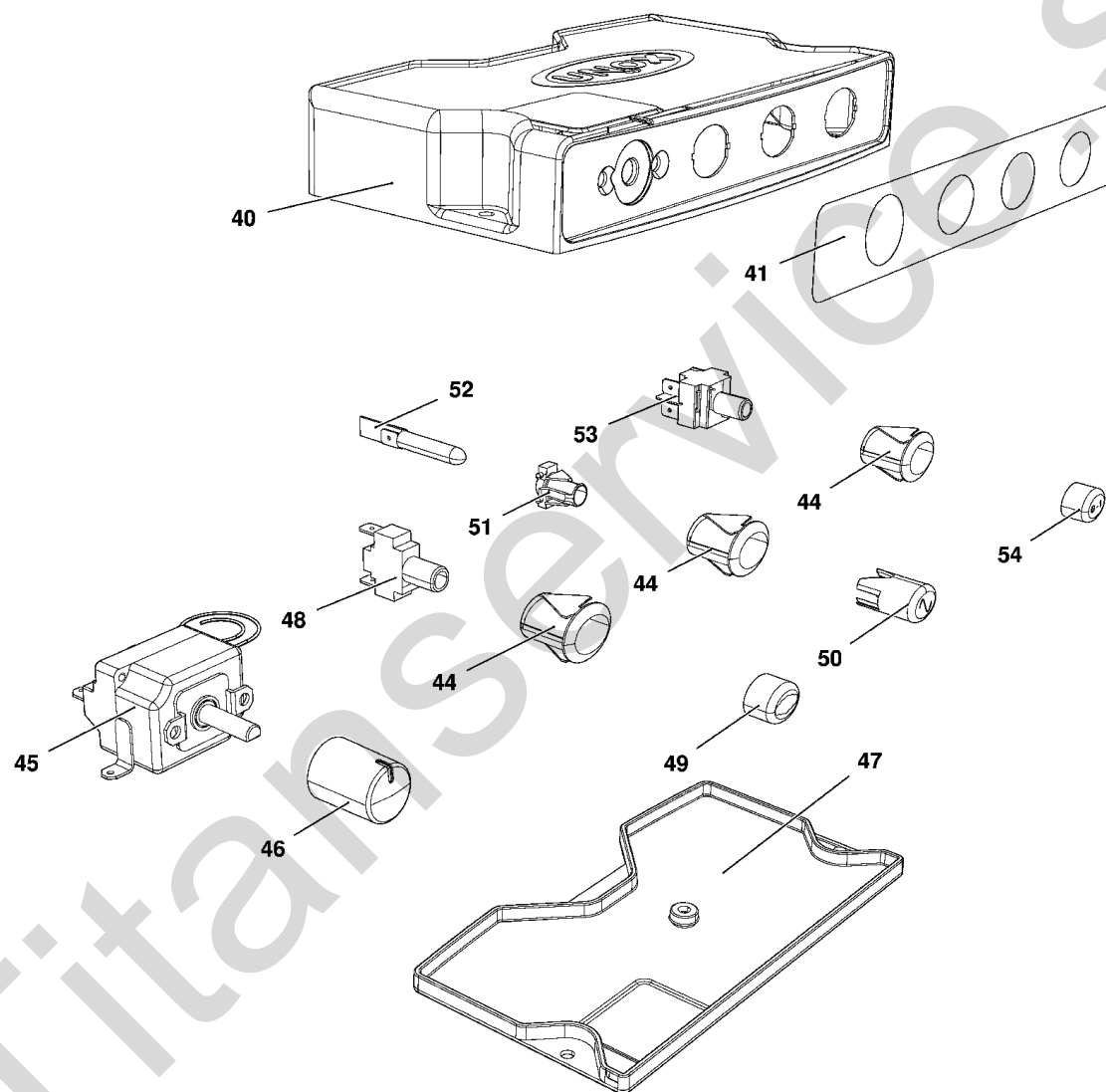


MOD:XLT133

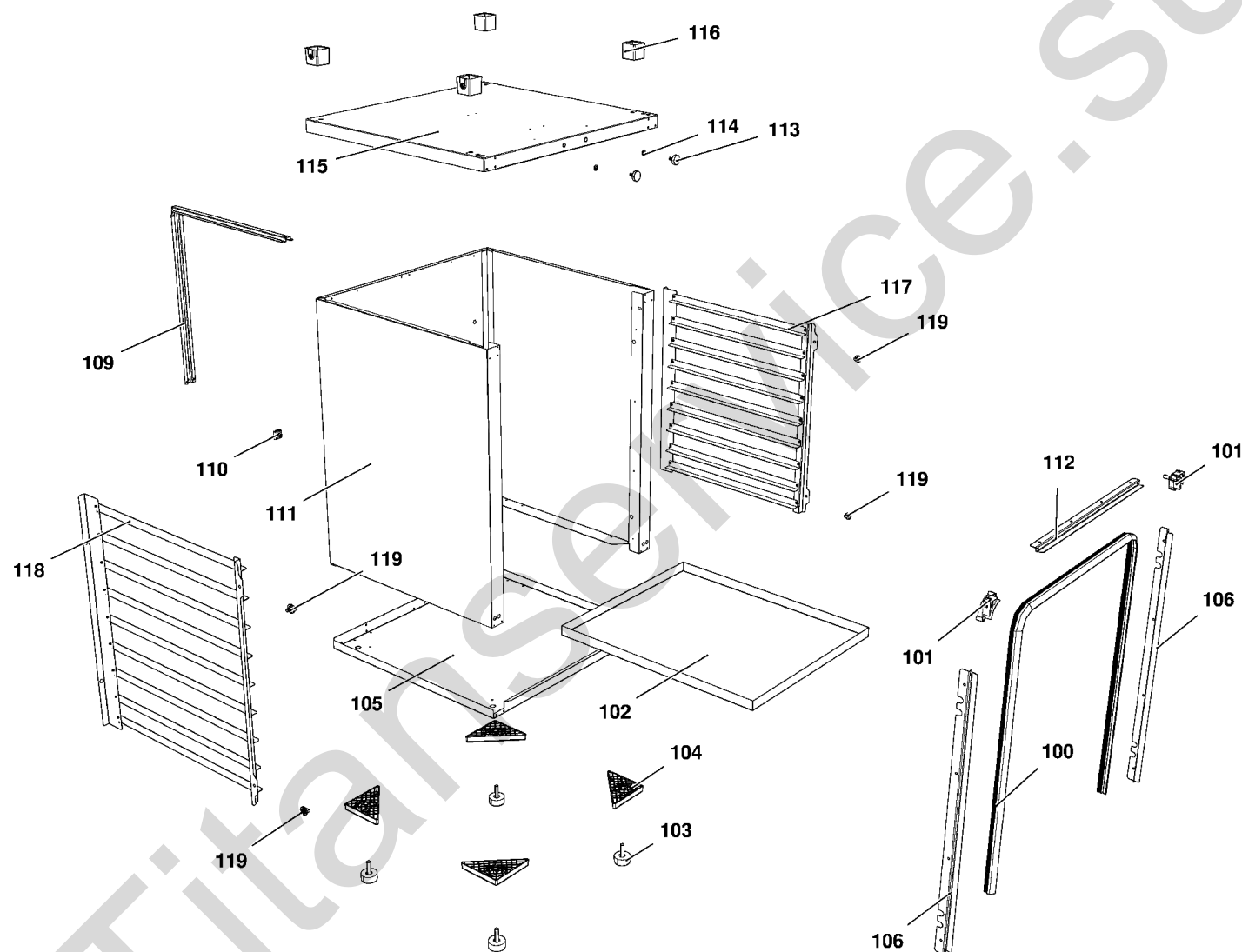


MOD:XLT133

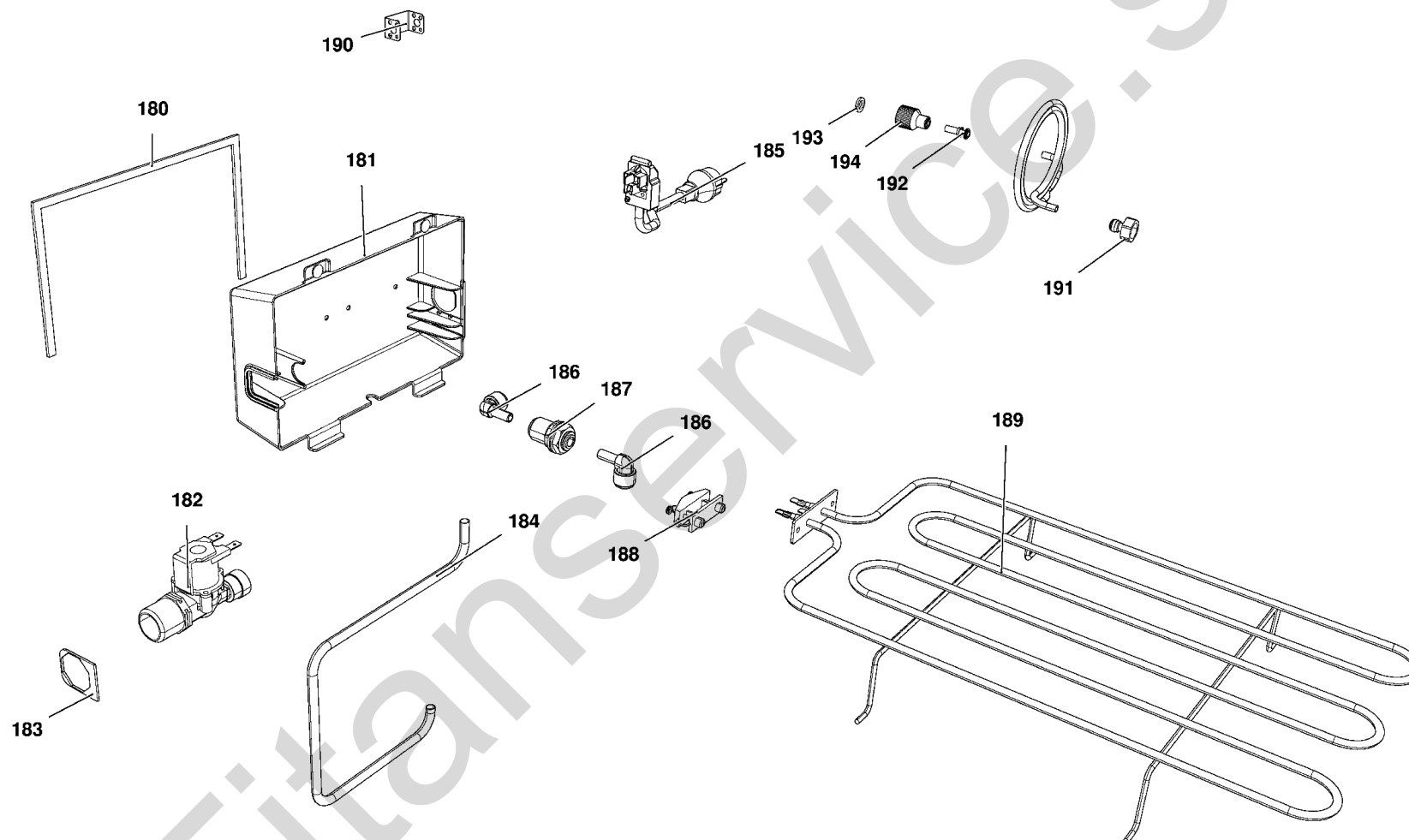




MOD:XLT133



MOD:XLT133



MOD:XLT133



IT

Descrizione codici

1	VT1076B	VETRO PORTA 299X661 NERO XLT135/XLT133
2	0H4540A	LAMIERA PER CALAMITA PORTA XL 405
3	GN1330A	GUARIZIONE LAMIERINO FERRITICO XL405
4	MG1015B	TERMINALE MANIGLIA L.MISS/L.MICRO/CHEFTO
5	VM1022A	STAFFA SUPERIORE PORTA LIEVITATORE
6	CR1081A	CERNIERA SX INOX XV-XL-XB
7	GN1320A	GUARNIZIONE CERNIERA VETRO PORTA
8	VM1024A	STAFFA INFERIORE SX PORTA LIEVITATORE
9	CR1080A	CERNIERA DX INOX XV-XL-XB
10	TB1077A	TUBO MANIGLIA XLT135/XLT195 Ø18x1
11	VM1720A	RONDELLA PORTA XL405
12	VM1023A	STAFFA INFERIORE DX PORTA LIEVITATORE
40	VM1019A	CRUSCOTTO COMANDI LIEVITATORI MANUAL
41	MS1018A	MASCHERINA SERIGRAFATA LIEV. MANUALE
44	VM2009A	SUPPORTO ELLITTICO D16 ARGENTO
45	TR1132A	TERMOSTATO 2-72°C
46	MN1003A	MANOPOLA TERMOSTATO LIEVITATORE 0-70°C
47	VM1028A	VASSOIO CRUSCOTTO LIEVITATORE MANUAL
48	VE1562A	PULSANTE UNIPOLARE NA
49	VM1775A	TASTO ARGENTO OPACO NUVOLETTA ORO
50	VE1585A	GEMMA ELLITTICA AZZURRA SINUSOIDE ORO
51	VM1762A	SUPPORTO LAMPADA INTERNO
52	VE1535A	LED BIANCO 230V
53	VE1561A	PULSANTE BIPOLARE NA/NA
54	VM1776A	TASTO ARGENTO OPACO "0-1" ORO
100	GN1520A	GUARNIZIONE PORTA XLT135/XLT133
101	VM1645A	ANGOLO GUARNIZIONE XL405
102	0H1191A	VASCA UMIDITA' XLT135
103	PD1065A	PIEDINO D45 H20 M10X40
104	VM1281A	STAFFA TRIANGOLARE PIEDINO-RUOTA
105	0E1007B	FONDO ESTERNO XLT135/XLT133

106	0H1181A	PROFILO LAT. GUARNIZIONE XLT135/XLT133
109	0H1184A	COVER CABLAGGIO XLT133
110	VM1750A	MORSETTIERA A PETTINE
111	0D1029B	MANTELLINO XLT135/XLT133
112	0H1179A	PROFILO SUP. GUARNIZIONE XLT135/XLT133
113	VE1607A	VENTOSA MAGNETICA GOMMATA D22 H6 M6X14.5
114	VI1521A	RONDELLA PIANA 6X12X1 INOX
115	0D1039A	COPERCHIO XLT133
116	VM1029A	RIALZO PIEDINO SOVRAPPOSIZIONE LM
117	GRL1014A	GRIGLIA LATERALE DX LIEVITATORE LM 600
118	GRL1013A	GRIGLIA LATERALE SX LIEVITATORE LM 600
119	VM1820A	NOTTOLINO M6 CROMATO FISS. SUPPORTI
180	GN1523A	GUARNIZIONE SCATOLA COMPONENTI XLT
181	VE1130B	SCATOLA PORTACOMPONENTI LIEVITATORE
182	EL1140A	ELETTROVALVOLA SINGOLA ATT. J.GUEST
183	0H1196A	LAMIERINO CHIUSURA PORTACOMP. XLT
184	CE1019A	CAVO DI INTERCONNESSIONE LIEVITATORI MAN
185	MR1000A	CAVO 3X1,5 H07RN-F MT1,5+K2/3+SCHUKO
186	EL1195A	RACCORDO A GOMITO CON J.GUEST
187	EL1125A	PASSAPARETE Ø8
188	VE1075A	PRESSACAVO FV 268 RO+VITI FISSAGGIO
189	RS1095A	RESISTENZA PIANA 1200W 230V
190	0H4820A	STAFFA SOSTEGNO BULBO
191	RC1030A	RACCORDO DIRITTO D=8 - 3/4 FEMMINA JOHN
192	RC1002A	RACCORDO RIDUZIONE CODOLO 10M-8F
193	GN1200A	GUARNIZIONE D=24 RACCORDO 3/4 GOMMA
194	RC1365A	RACCORDO JG FEMMINA 3/4"-10

MOD:XLT133



EN

Codes descriptions

1	VT1076B	XLT135/XLT133 BLACK DOOR GLASS 299x661
2	0H4540A	MAGNET DOOR PLATES XL405
3	GN1330A	FERRITIC PLATE GASKET XL405
4	MG1015B	L.MISS/L.MICRO/CHEFTOP HANDLE TERMINALS
5	VM1022A	PROVER DOOR UPPER BRACKET
6	CR1081A	XV-XL-XB ST. STEEL LEFT HINGE
7	GN1320A	DOOR GLASS HINGE GASKET
8	VM1024A	PROVER DOOR LEFT LOWER BRACKET
9	CR1080A	XV-XL-XB ST. STEEL RIGHT HINGE
10	TB1077A	XLT135/XLT195 Ø18x1 HANDLE TUBE
11	VM1720A	DOOR WASHER XL405
12	VM1023A	PROVER DOOR RIGHT LOWER BRACKET
40	VM1019A	MANUAL PROVER CONTROL BOARD
41	MS1018A	MANUAL PROVER CONTROL BOARD STICKER
44	VM2009A	ELLIPTICAL SILVER SUPPORT D16
45	TR1132A	THERMOSTAT KIT 2-72°C
46	MN1003A	PROVER THERMOSTAT 0-70°C KNOB
47	VM1028A	MANUAL PROVER CONTROL BOARD TRAY
48	VE1562A	UNIPOLAR NA PUSH BUTTON
49	VM1775A	OPAQUE SILVER KEY WITH GOLD "CLOUD"
50	VE1585A	BLUE LIGHT COVER GOLD SINUSOID
51	VM1762A	INNER LAMP SUPPORT
52	VE1535A	WHITE LED 230V
53	VE1561A	BIPOLAR SWITCH NA/NA
54	VM1776A	MATT SILVER KEY "0-1" GOLD
100	GN1520A	XLT135/XLT133 DOOR GASKET
101	VM1645A	CABINET AND PROVER GASKET CORNER
102	0H1191A	XLT135 WATER TRAY
103	PD1065A	ACCESSORY FOOT D45 H20 M10X40
104	VM1281A	TRIANGULAR BRACKET FOR FOOT AND WHEEL
105	0E1007B	XLT135/XLT133 EXTERNAL BOTTOM PANEL

106	0H1181A	XLT135/XLT133 DOOR GASKET LAT. PROFILE
109	0H1184A	XLT133 CABLES COVER
110	VM1750A	TERMINAL BOARD
111	0D1029B	XLT135/XLT133 EXTERNAL CHASING
112	0H1179A	XLT135/XLT133 DOOR GASKET UPPER PROFILE
113	VE1607A	RUBBER MAGNETIC SUCTION CUP
114	VI1521A	STAINLESS STEEL WASHER D=6 6592
115	0D1039A	XLT133 EXTERNAL COVER
116	VM1029A	L.MISS STACKING FOOT RISE
117	GRL1014A	L.Miss Prover 46x33 RIGHT LATERAL GRID
118	GRL1013A	L.Miss Prover 46x33 LEFT LATERAL GRID
119	VM1820A	LATERAL SUPPORTS M6 FIXING BOLTS
180	GN1523A	XLT COMPONENTS BOX SEAL
181	VE1130B	PROVERS COMPONENTS HOLDING BOX
182	EL1140A	SINGLE WATER ELECTROVALVE W/ J.GUEST
183	0H1196A	XLT COMPONENTS HOLDER SEALING PLATE
184	CE1019A	MANUAL PROVER INTERCONNECTION CABLE
185	MR1000A	CABLE 3X1,5 H07RN-F MT1,5+K2/3+SCHUKO
186	EL1195A	ELBOW UNION WITH J.GUEST TERMINAL
187	EL1125A	WALL PASSING SEAL Ø8
188	VE1075A	WIRE CLAMP FV 268 RO + FIXING SCREWS
189	RS1095A	HEATING ELEMENT 1200W 230V
190	0H4820A	BULB HOLDING BRACKET
191	RC1030A	STRAIGHT JOINT D=8-3/4 FEMALE JOHN
192	RC1002A	10M-8F J.G. TERMINAL REDUCTION FITTING
193	GN1200A	3/4 CONNECTION SEAL D=24 RUBBER+NET
194	RC1365A	3/4"-10 JG FEMALE CONNECTION