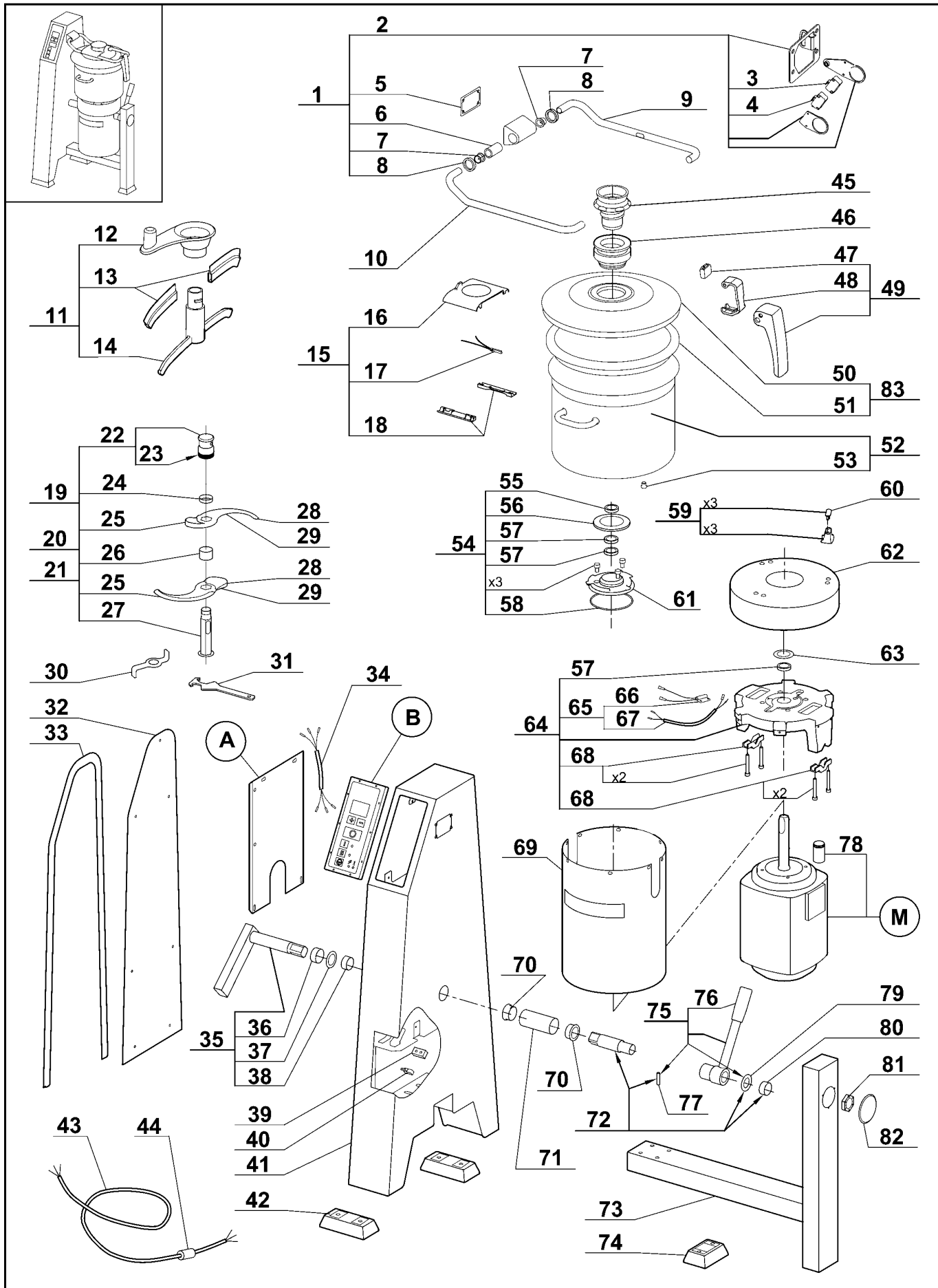


**robotcoupe®**

**R 30 A**  
**R 30 A V.V.**

N° de série / Serial number  
- 611 - - - - -  
- 623 - - - - -



	<i>Pièce / Part</i>	<i>Désignation</i>	<i>Description</i>
1	<b>59 128</b>	ENSEMBLE CHARNIERE SECURITE BRAS	HINGE ARM ASSEMBLY
2	<b>59 273</b>	ENSEMBLE SECURITE BRAS	LID ARM SAFETY ASSEMBLY
3	<b>501 258S</b>	INTERRUPTEUR SECURITE NORMALEMENT FERME	NORMALLY CLOSED SAFETY SWITCH
4	<b>507 250S</b>	INTERRUPTEUR SECURITE NORMALEMENT OUVERT	NORMALLY OPENED SAFETY SWITCH
5	<b>118 255S</b>	JOINT PLAT DE CHARNIERE	HINGE FLAT SEAL
6	<b>105 912S</b>	CAME INTERRUPTEURS SECURITE	SAFETY SWITCHES CAM
7	<b>118 126S</b>	DOUILLE DE GUIDAGE	BUSHING
8	<b>501 424S</b>	BAGUE ETANCHEITE 20x30x7	SEALING RING 20x30x7
9	<b>119 206S</b>	TUBE DROIT	RIGHT LID TUBE
10	<b>119 207S</b>	TUBE GAUCHE	LEFT LID TUBE
11	<b>59 506</b>	ENSEMBLE ESSUIE COUVERCLE	LID WIPER ASSEMBLY
12	<b>59 395</b>	POIGNEE RACLEUR	BLIXER ARM HANDLE
13	<b>59 507</b>	RACLEURS SOUPLES COUVERCLE (Qté = 2)	LID SOFT WIPER (Qty = 2).
14	<b>59 508</b>	SUPPORT ESSUIE COUVERCLE	LID WIPER SUPPORT
15	<b>59 504</b>	ENSEMBLE SUPPORT COUVERCLE	LID SUPPORT ASSEMBLY
16	<b>59 505</b>	SUPPORT COUVERCLE	LID SUPPORT
17	<b>118 132S</b>	INTERRUPTEUR SECURITE COUVERCLE	LID SAFETY SWITCH
18	<b>59 131</b>	ENSEMBLE PINCES BRAS	ARM CLIPS ASSEMBLY
19	<b>57 074</b>	COUTEAU LISSE	STRAIGHT BLADE ASSEMBLY
20	<b>57 075</b>	COUTEAU CRANTE	COARSE SERRATED BLADE ASSEMBLY
21	<b>57 077</b>	COUTEAU DENTE	FINE SERRATED BLADE ASSEMBLY
22	<b>105 904S</b>	ECROU COUTEAU AVEC BAGUE PLASTIQUE	BLADE LOCKING NUT WITH PLASTIC WASHER
23	<b>105 906S</b>	RONDELLE PLASTIQUE INTEGREE	INTEGRATED PLASTIC WASHER
24	<b>118 201S</b>	BAGUE COUTEAU 10 mm	BLADE SPACER 10 mm
25	<b>117 950S</b>	LAME LISSE	STRAIGHT BLADE
26	<b>118 200S</b>	BAGUE COUTEAU 32 mm	BLADE SPACER 32 mm
27	<b>117 930S</b>	SUPPORT COUTEAU	BLADE SUPPORT
28	<b>118 241S</b>	LAME DENTEE	FINE SERRATED BLADE
29	<b>118 286S</b>	LAME CRANTE	COARSE SERRATED BLADE
30	<b>118 268S</b>	DEMONTE COUTEAU	BLADE DISMANTLING DEVICE
31	<b>119 200S</b>	CLEF DEMONTE COUTEAU	BLADE DISMANTLING WRENCH
32	<b>117 935S</b>	FACE ARRIERE	CASING ACCESS DOOR
33	<b>118 256S</b>	JOINT FACE ARRIERE	CASING ACCESS DOOR SEAL
34	<b>118 127S</b>	FAISCEAU INTERRUPTEUR SECURITE BRAS	LID ARM SAFETY SWITCH HARNESS
35	<b>59 135</b>	ENSEMBLE AXE ARRIERE	BACK TILTING PIVOT ASSEMBLY
36	<b>118 146S</b>	ENTRETOISE AXE ARRIERE	BACK TILTING PIVOT SPACER
37	<b>118 147S</b>	RONDELLE APPUI ARRIERE	BACK THRUST WASHER
38	<b>118 148S</b>	DOUILLE PALIER ARRIERE	BACK BEARING BUSH
39	<b>117 959S</b>	BUTEE BASCULEMENT	TILTING STOP
40	<b>507 007S</b>	INTERRUPTEUR SECURITE BASCULEMENT	TILTING SAFETY SWITCH
41	<b>117 934S</b>	CAISSON	CASING
42	<b>118 186S</b>	PIED ARRIERE	CASING FOOT
43	<b>502 687S</b>	CABLE	POWER CORD
44	<b>501 773S</b>	PASSE FIL	POWER CORD PROTECTOR
45	<b>59 313</b>	CONE DE COUVERCLE	LID FUNNEL
46	<b>59 318</b>	APPUI DE COUVERCLE	LID GUIDE
47	<b>119 259S</b>	BUTEE DE CROCHET	LID LATCH RUBBER STOP
48	<b>119 267S</b>	CROCHET	LID LATCH
49	<b>59 272</b>	ENSEMBLE POIGNEE	HANDLE ASSEMBLY
50	<b>59 518</b>	COUVERCLE	LID
51	<b>119 264S</b>	JOINT DE COUVERCLE	LID SEAL
52	<b>59 132</b>	ENSEMBLE CUVE	BOWL ASSEMBLY
53	<b>118 171S</b>	BOUCHON SECURITE	SAFETY PLUG
54	<b>59 221</b>	ENSEMBLE JOINTS D'ARBRE	SHAFT SEALS ASSEMBLY
55	<b>507 168S</b>	JOINT FACIAL	FACIAL SHAFT SEAL
56	<b>118 153S</b>	JOINT FOND DE CUVE	BOWL SEAL

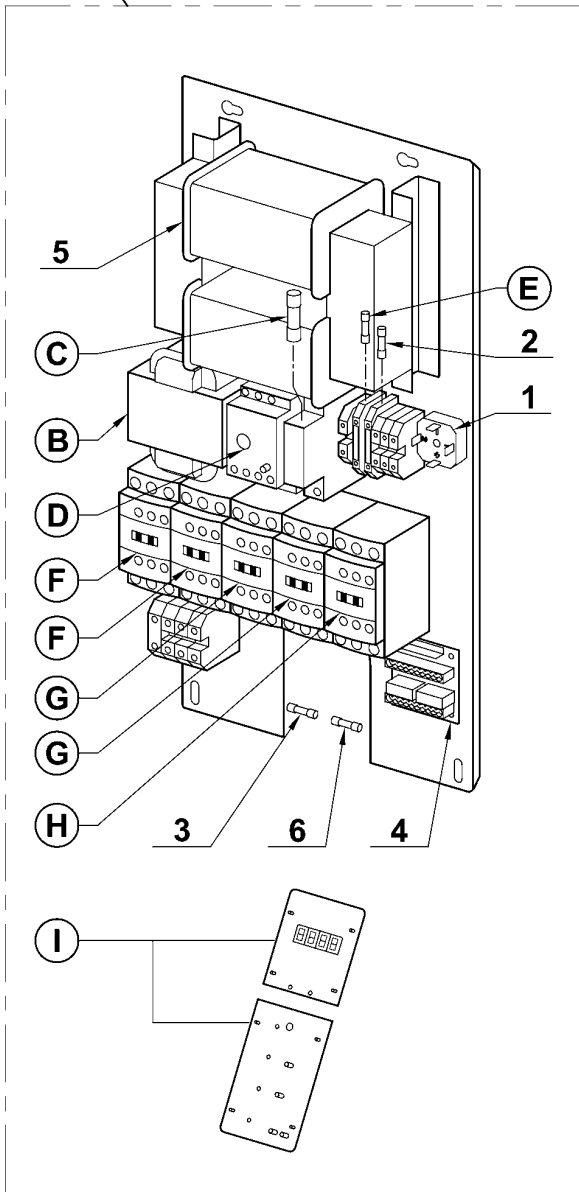
Index	Pièce / Part	Désignation	Description
57	<b>501 105S</b>	BAGUE A LEVRES 30x40x7	SHAFT SEAL 30x40x7
58	<b>507 050S</b>	JOINT TORIQUE 120x3,5 mm	O-RING 120x3.5 mm
59	<b>59 165</b>	ENSEMBLE APPUIS DE CUVE (Qté = 3)	BOWL SUPPORTS ASSEMBLY (Qty = 3)
60	<b>118 595S</b>	APPUI CUVE PLASTIQUE	PLASTIC BOWL SUPPORT
61	<b>117 922S</b>	DOUILLE PORTE JOINTS	SEALS SOCKET
62	<b>118 151S</b>	JUPE HAUTE	UPPER MOTOR COVER
63	<b>118 155S</b>	DEFLECTEUR MOTEUR	MOTOR DEFLECTOR
64	<b>59 197</b>	ENSEMBLE SUPPORT MOTEUR	MOTOR SUPPORT ASSEMBLY
65	<b>118 157S</b>	ENSEMBLE INTERRUPTEUR SECURITE CUVE	BOWL SAFETY SWITCH ASSEMBLY
66	<b>119 199S</b>	INTERRUPTEUR SECURITE CUVE	BOWL SAFETY SWITCH
67	<b>119 194S</b>	FAISCEAU INTERRUPTEUR SECURITE CUVE	BOWL SAFETY SWITCH HARNESS
68	<b>59 223</b>	ENSEMBLE CAVALIER AXE BASCULEMENT	TILTING PIVOT STAPLE ASSEMBLY
69	<b>118 296S</b>	JUPE BASSE	LOWER MOTOR COVER
70	<b>118 150S</b>	DOUILLE MANCHON	SLEEVE BUSH
71	<b>118 149S</b>	MANCHON 107 mm	SLEEVE 107 mm
72	<b>59 137</b>	ENSEMBLE AXE AVANT	FRONT TILTING PIVOT ASSEMBLY
73	<b>117 936S</b>	PIEtement	STAND
74	<b>117 958S</b>	PIED AVANT	FRONT FOOT
75	<b>59 138</b>	ENSEMBLE LEVIER DE SERRAGE	LOCKING LEVER ASSEMBLY
76	<b>118 142S</b>	POIGNEE DE BASCULEMENT	TILTING HANDLE
77	<b>208 582S</b>	GOUPILLE AXE DE BASCULEMENT	TILTING SHAFT PIN
78	<b>59 439</b>	KIT BAGUE MOTEUR	MOTOR SLEEVE KIT
79	<b>118 143S</b>	RONDELLE D'APPUI AVANT	FRONT THRUST WASHER
80	<b>118 144S</b>	DOUILLE PALIER AVANT	FRONT BEARING BUSH
81	<b>118 166S</b>	ECROU REGLAGE BASCULEMENT	TILTING ADJUSTING NUT
82	<b>117 956S</b>	BOUCHON	COVER
83	<b>59 494</b>	ENSEMBLE COUVERCLE ET JOINT	LID AND GASKET ASSEMBLY

Index	Désignation	Description
<b>A</b>	PLATINE DE PUISSANCE	POWER CONTROL BOARD
<b>B</b>	ENSEMBLE CLAVIER DE COMMANDE	CONTROL PANEL ASSEMBLY
<b>M</b>	MOTEUR	MOTOR

Machine	Voltage	A	B	M
<b>52 331</b>	<b>400/50/3</b>	<b>119 178</b>	<b>59 139</b>	<b>303 134S</b>
<b>52 334</b>	<b>380/60/3</b>			<b>303 136S</b>
<b>52 337</b>	<b>440/60/3</b>			<b>303 134S</b>
<b>52 333</b>	<b>220/60/3</b>	<b>119 179</b>		<b>303 121S</b>
<b>52 335</b>	<b>230/50/3</b>			<b>303 138S</b>
<b>52 339</b>	<b>220/60/3</b>			<b>303 121S</b>
<b>52 338</b>	<b>400/50/3</b>	<b>59 244</b>	<b>59 229</b>	<b>303 134S</b>

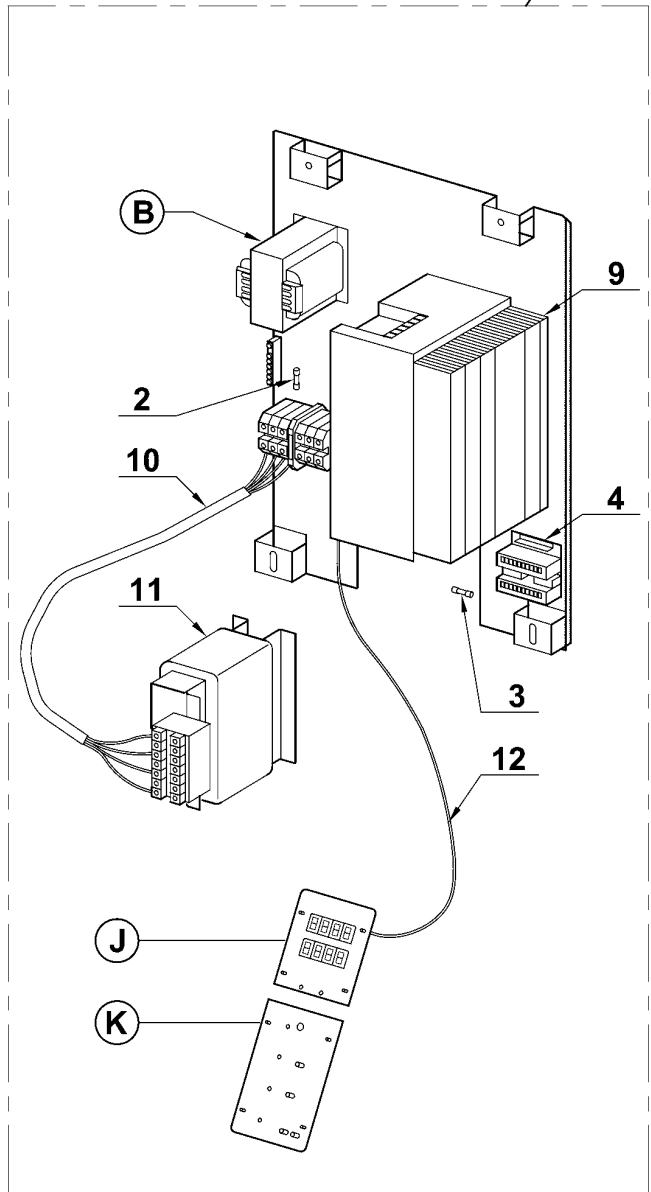
(A)

**R 30 A**

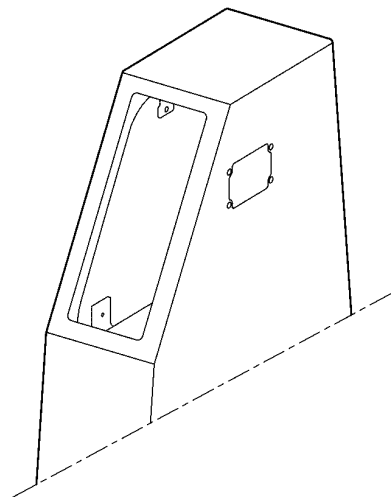
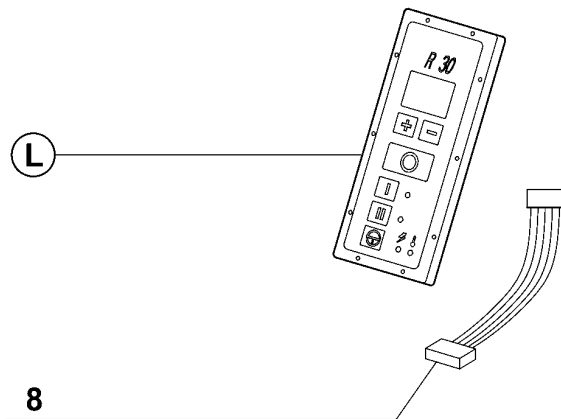


**R 30 A V.V.**

(A)



(L)



Index	Pièce / Part	Désignation	Description
1	511 620S	PONT DE DIODES	RECTIFIER BRIDGE
2	500 537S	FUSIBLE PRIMAIRE 9/24V	PRIMARY FUSE 9/24V
3	504 253S	FUSIBLE SECONDAIRE 9V	SECONDARY FUSE 9V
4	117 980S	CARTE DE CONNEXION	CONNECTING BOARD
5	503 971S	TRANSFORMATEUR 48V	TRANSFORMER 48V
6	507 121S	FUSIBLE SECONDAIRE 24V	SECONDARY FUSE 24V
7	59 482	CARTE DE COMMANDE + TIMER	CONTROL + TIMER BOARD KIT
8	117 982S	LIMANDE DE LIAISON	LINK CABLE
9	59 254	VARIATEUR	INVERTER
10	59 247	FAISCEAU SELF	SELF WIRES
11	59 248	FILTRE SELF	SELF FILTER
12	59 212	FAISCEAU CONSIGNE	ANALOG INPUT WIRE

Index	Désignation	Description
<b>A</b>	PLATINE DE PUISSANCE	POWER CONTROL BOARD
<b>B</b>	TRANSFORMATEUR DE COMMANDE	CONTROL TRANSFORMER
<b>C</b>	FUSIBLE DE FREINAGE	BRAKING CIRCUIT FUSE
<b>D</b>	RELAIS THERMIQUE	THERMAL OVERLOAD RELAY
<b>E</b>	FUSIBLE PRIMAIRE 48V	PRIMARY FUSE 48V
<b>F</b>	CONTACTEUR	CONTACTOR
<b>G</b>	CONTACTEUR	CONTACTOR
<b>H</b>	CONTACTEUR	CONTACTOR
<b>I</b>	CARTE DE COMMANDE + TIMER	CONTROL + TIMER BOARD KIT
<b>J</b>	CARTE TIMER V.V.	TIMER V.V. BOARD
<b>K</b>	CARTE DE COMMANDE V.V.	V.V. CONTROL BOARD
<b>L</b>	ENSEMBLE CLAVIER DE COMMANDE	CONTROL PANEL ASSEMBLY

Machine	Voltage	A	B	C	D	E	F
52 331	400/50/3	119 178	503 970S	503 356S	503 960S	503 106S	503 363S
52 334	380/60/3						
52 337	440/60/3						
52 333	220/60/3	119 179	507 200S	502 495S	503 376S	504 257S	503 362S
52 335	230/50/3						
52 339	220/60/3						
52 338	400/50/3	59 244	503 352	-	-	-	-

Machine	Voltage	G	H	I	J	K	L
52 331	400/50/3	503 364S	507 174S	59 482	-	-	59 139
52 334	380/60/3						
52 337	440/60/3						
52 333	220/60/3	503 362S		-	-	-	59 229
52 335	230/50/3						
52 339	220/60/3						
52 338	400/50/3	-	-	-	59 269	59 270	59 229