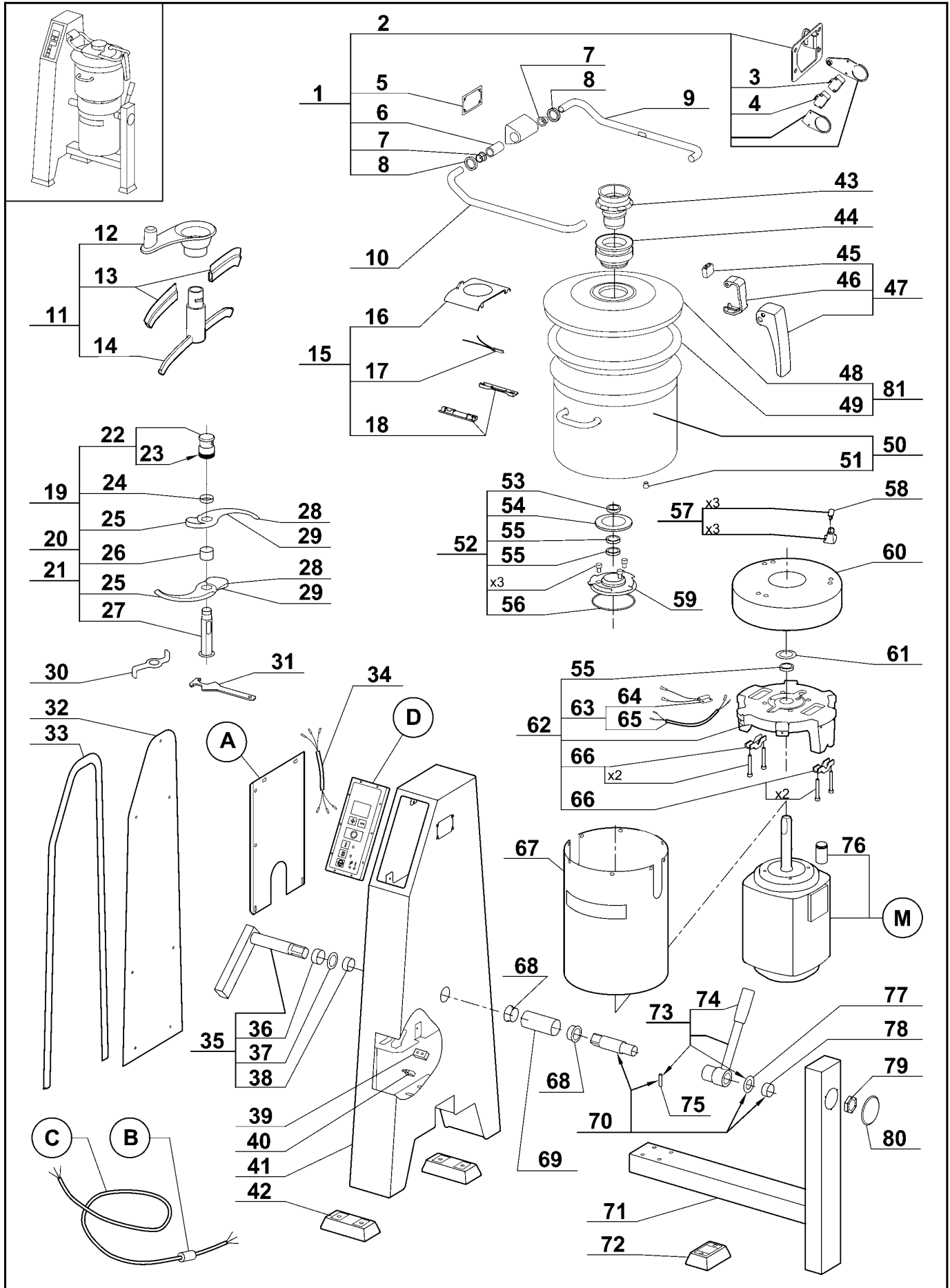


**robotcoupe®**

**R 45 A**  
**R 45 A V.V.**

N° de série / Serial number  
- 612 - - - - -  
- 624 - - - - -



<i>Index</i>	<i>Pièce / Part</i>	<i>Désignation</i>	<i>Description</i>
1	<b>59 128</b>	ENSEMBLE CHARNIERE SECURITE BRAS	HINGE ARM ASSEMBLY
2	<b>59 273</b>	ENSEMBLE SECURITE BRAS	LID ARM SAFETY ASSEMBLY
3	<b>501 258S</b>	INTERRUPTEUR SECURITE NORMALEMENT FERME	NORMALLY CLOSED SAFETY SWITCH
4	<b>507 250S</b>	INTERRUPTEUR SECURITE NORMALEMENT OUVERT	NORMALLY OPENED SAFETY SWITCH
5	<b>118 255S</b>	JOINT PLAT DE CHARNIERE	HINGE FLAT SEAL
6	<b>105 912S</b>	CAME INTERRUPTEURS SECURITE	SAFETY SWITCHES CAM
7	<b>118 126S</b>	DOUILLE DE GUIDAGE	BUSHING
8	<b>501 424S</b>	BAGUE ETANCHEITE 20x30x7	SEALING RING 20x30x7
9	<b>119 208S</b>	TUBE DROIT	RIGHT LID TUBE
10	<b>119 209S</b>	TUBE GAUCHE	LEFT LID TUBE
11	<b>59 511</b>	ENSEMBLE ESSUIE COUVERCLE	LID WIPER ASSEMBLY
12	<b>59 395</b>	POIGNEE RACLEUR	BLIXER ARM HANDLE
13	<b>59 512</b>	RACLEURS SOUPLES COUVERCLE (Qté = 2)	LID SOFT WIPER (Qty = 2).
14	<b>59 513</b>	SUPPORT ESSUIE COUVERCLE	LID WIPER SUPPORT
15	<b>59 504</b>	ENSEMBLE SUPPORT COUVERCLE	LID SUPPORT ASSEMBLY
16	<b>59 505</b>	SUPPORT COUVERCLE	LID SUPPORT
17	<b>118 132S</b>	INTERRUPTEUR SECURITE COUVERCLE	LID SAFETY SWITCH
18	<b>59 131</b>	ENSEMBLE PINCES BRAS	ARM CLIPS ASSEMBLY
19	<b>57 081</b>	COUTEAU LISSE	STRAIGHT BLADE ASSEMBLY
20	<b>57 082</b>	COUTEAU CRANTE	COARSE SERRATED BLADE ASSEMBLY
21	<b>57 084</b>	COUTEAU DENTE	FINE SERRATED BLADE ASSEMBLY
22	<b>105 905S</b>	ECROU COUTEAU AVEC BAGUE PLASTIQUE	BLADE LOCKING NUT WITH PLASTIC WASHER
23	<b>105 907S</b>	RONDELLE PLASTIQUE INTEGREE	INTEGRATED PLASTIC WASHER
24	<b>118 204S</b>	BAGUE COUTEAU 14 mm	BLADE SPACER 14 mm
25	<b>117 952S</b>	LAME LISSE	STRAIGHT BLADE
26	<b>118 205S</b>	BAGUE COUTEAU 43 mm	BLADE SPACER 43 mm
27	<b>117 932S</b>	SUPPORT COUTEAU	BLADE SUPPORT
28	<b>118 243S</b>	LAME DENTEE	FINE SERRATED BLADE
29	<b>118 287S</b>	LAME CRANTE	COARSE SERRATED BLADE
30	<b>118 268S</b>	DEMONTE COUTEAU	BLADE DISMANTLING DEVICE
31	<b>119 200S</b>	CLEF DEMONTE COUTEAU	BLADE DISMANTLING WRENCH
32	<b>117 940S</b>	FACE ARRIERE	CASING ACCESS DOOR
33	<b>118 257S</b>	JOINT FACE ARRIERE	CASING ACCESS DOOR SEAL
34	<b>118 127S</b>	FAISCEAU INTERRUPTEUR SECURITE BRAS	LID ARM SAFETY SWITCH HARNESS
35	<b>59 135</b>	ENSEMBLE AXE ARRIERE	BACK TILTING PIVOT ASSEMBLY
36	<b>118 146S</b>	ENTRETOISE AXE ARRIERE	BACK TILTING PIVOT SPACER
37	<b>118 147S</b>	RONDELLE APPUI ARRIERE	BACK THRUST WASHER
38	<b>118 148S</b>	DOUILLE PALIER ARRIERE	BACK BEARING BUSH
39	<b>117 959S</b>	BUTEE BASCULEMENT	TILTING STOP
40	<b>507 250S</b>	INTERRUPTEUR SECURITE BASCULEMENT	TILTING SAFETY SWITCH
41	<b>117 939S</b>	CAISSON	CASING
42	<b>118 186S</b>	PIED ARRIERE	CASING FOOT
43	<b>59 313</b>	CONE DE COUVERCLE	LID FUNNEL
44	<b>59 318</b>	APPUI DE COUVERCLE	LID GUIDE
45	<b>119 259S</b>	BUTEE DE CROCHET	LID LATCH RUBBER STOP
46	<b>119 267S</b>	CROCHET	LID LATCH
47	<b>59 272</b>	ENSEMBLE POIGNEE	HANDLE ASSEMBLY
48	<b>59 519</b>	COUVERCLE	LID
49	<b>119 265S</b>	JOINT DE COUVERCLE	LID SEAL
50	<b>59 142</b>	ENSEMBLE CUVE	BOWL ASSEMBLY
51	<b>118 171S</b>	BOUCHON SECURITE	SAFETY PLUG
52	<b>59 222</b>	ENSEMBLE JOINTS D'ARBRE	SHAFT SEALS ASSEMBLY
53	<b>59 168</b>	JOINT FACIAL	FACIAL SHAFT SEAL
54	<b>118 153S</b>	JOINT FOND DE CUVE	BOWL SEAL
55	<b>507 054S</b>	BAGUE A LEVRES 40x52x7	SHAFT SEAL 40x52x7
56	<b>507 050S</b>	JOINT TORIQUE 120x3,5 mm	O-RING 120x3.5 mm

Index	Pièce / Part	Désignation	Description
57	<b>59 165</b>	ENSEMBLE APPUIS DE CUVE (Qté = 3)	BOWL SUPPORTS ASSEMBLY (Qty = 3)
58	<b>118 595S</b>	APPUI CUVE PLASTIQUE	PLASTIC BOWL SUPPORT
59	<b>117 928S</b>	DOUILLE PORTE JOINTS	SEALS SOCKET
60	<b>118 175S</b>	JUPE HAUTE	UPPER MOTOR COVER
61	<b>118 174S</b>	DEFLECTEUR MOTEUR	MOTOR DEFLECTOR
62	<b>59 198</b>	ENSEMBLE SUPPORT MOTEUR	MOTOR SUPPORT ASSEMBLY
63	<b>118 157S</b>	ENSEMBLE INTERRUPTEUR SECURITE CUVE	BOWL SAFETY SWITCH ASSEMBLY
64	<b>119 199S</b>	INTERRUPTEUR SECURITE CUVE	BOWL SAFETY SWITCH
65	<b>119 194S</b>	FAISCEAU INTERRUPTEUR SECURITE CUVE	BOWL SAFETY SWITCH HARNESS
66	<b>59 223</b>	ENSEMBLE CAVALIER AXE BASCULEMENT	TILTING PIVOT STAPLE ASSEMBLY
67	<b>118 297S</b>	JUPE BASSE	LOWER MOTOR COVER
68	<b>118 150S</b>	DOUILLE MANCHON	SLEEVE BUSH
69	<b>118 149S</b>	MANCHON 107 mm	SLEEVE 107 mm
70	<b>59 137</b>	ENSEMBLE AXE AVANT	FRONT TILTING PIVOT ASSEMBLY
71	<b>117 941S</b>	PIEtement	STAND
72	<b>117 958S</b>	PIED AVANT	FRONT FOOT
73	<b>59 138</b>	ENSEMBLE LEVIER DE SERRAGE	LOCKING LEVER ASSEMBLY
74	<b>118 142S</b>	POIGNEE DE BASCULEMENT	TILTING HANDLE
75	<b>208 582S</b>	GOUPILLE AXE DE BASCULEMENT	TILTING SHAFT PIN
76	<b>59 440</b>	KIT BAGUE MOTEUR	MOTOR SLEEVE KIT
77	<b>118 143S</b>	RONDELLE D'APPUI AVANT	FRONT THRUST WASHER
78	<b>118 144S</b>	DOUILLE PALIER AVANT	FRONT BEARING BUSH
79	<b>118 166S</b>	ECROU REGLAGE BASCULEMENT	TILTING ADJUSTING NUT
80	<b>117 956S</b>	BOUCHON	COVER
81	<b>59 495</b>	ENSEMBLE COUVERCLE ET JOINT	LID AND GASKET ASSEMBLY

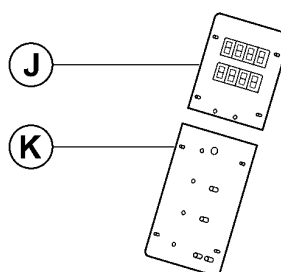
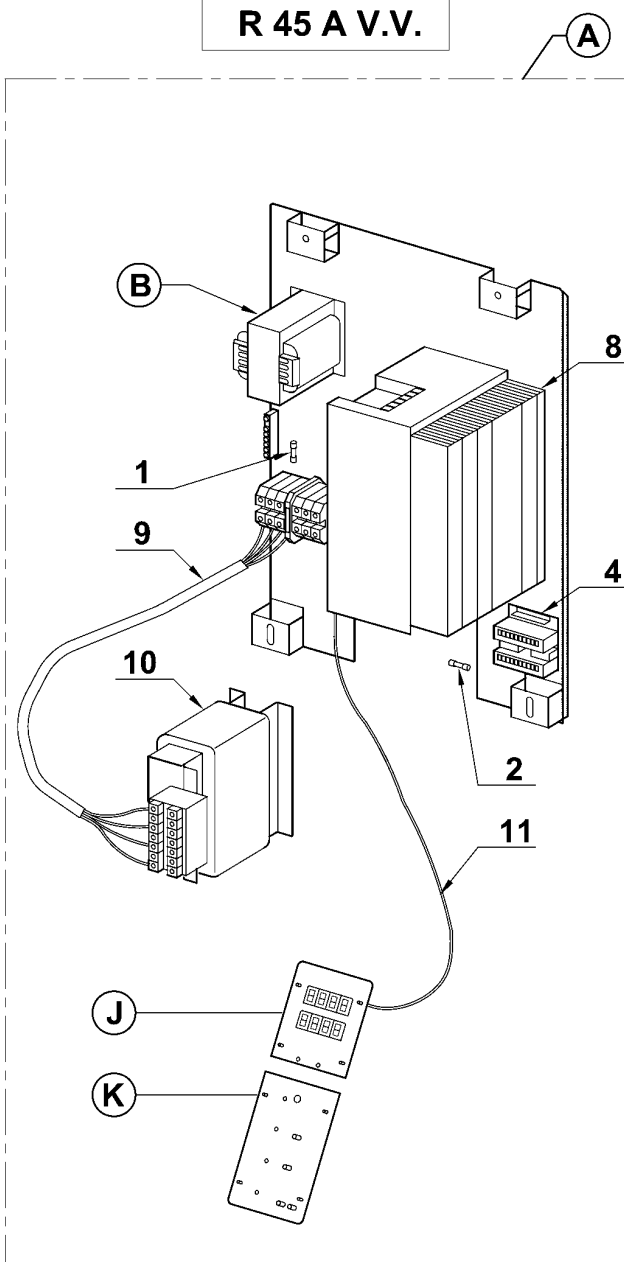
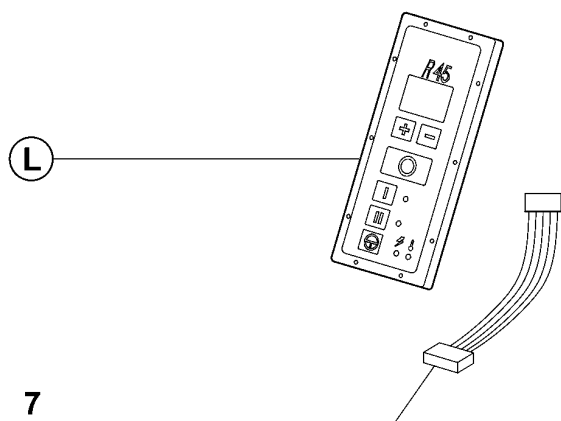
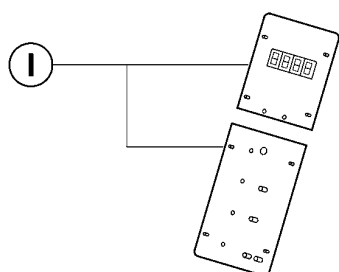
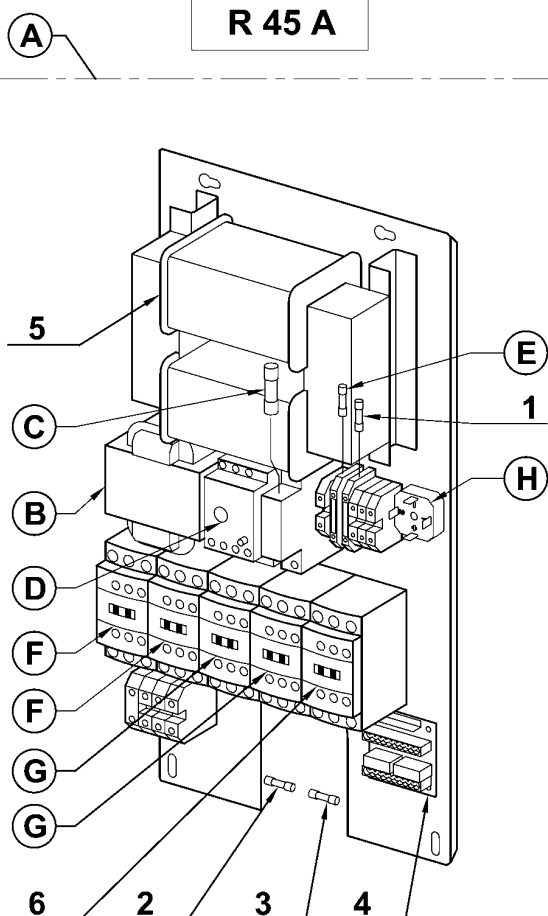
Index	Désignation	Description
<b>A</b>	PLATINE DE PUISSANCE	POWER CONTROL BOARD
<b>B</b>	PASSE-FIL	POWER CORD PROTECTOR
<b>C</b>	CABLE	POWER CORD
<b>D</b>	ENSEMBLE CLAVIER DE COMMANDE	CONTROL PANEL ASSEMBLY
<b>M</b>	MOTEUR	MOTOR

Machine	Voltage	A	B	C	D	M
<b>53 331</b>	<b>400/50/3</b>	<b>117 995</b>	<b>59 160</b>	<b>504 272S</b>	<b>59 145</b>	<b>303 064S</b>
<b>53 334</b>	<b>380/60/3</b>					<b>303 132S</b>
<b>53 337</b>	<b>440/60/3</b>					<b>303 064S</b>
<b>53 333</b>	<b>220/60/3</b>	<b>117 997</b>	<b>59 167</b>	<b>101 043S</b>	<b>59 145</b>	<b>303 122S</b>
<b>53 335</b>	<b>230/50/3</b>	<b>112 326</b>				<b>303 111S</b>
<b>53 339</b>	<b>220/60/3</b>	<b>117 997</b>				<b>303 122S</b>
<b>53 338</b>	<b>400/50/3</b>	<b>59 245</b>	<b>59 160</b>	<b>504 272</b>	<b>59 234</b>	<b>303 064</b>

robotcoupe®

R 45 A  
R 45 A V.V.

N° de série / Serial number  
- 612 - - - - -  
- 624 - - - - -



Index	Pièce / Part	Désignation	Description
1	500 537S	FUSIBLE PRIMAIRE 9/24V	PRIMARY FUSE 9/24V
2	504 253S	FUSIBLE SECONDAIRE 9V	SECONDARY FUSE 9V
3	507 121S	FUSIBLE SECONDAIRE 24V	SECONDARY FUSE 24V
4	117 980S	CARTE DE CONNEXION	CONNECTING BOARD
5	503 973S	TRANSFORMATEUR DE COMMANDE	CONTROL TRANSFORMER
6	503 362S	CONTACTEUR	CONTACTOR
7	117 982S	LIMANDE DE LIAISON	LINK CABLE
8	59 259	VARIATEUR	INVERTER
9	59 247	FAISCEAU SELF	SELF WIRES
10	59 249	FILTRE SELF	SELF FILTER
11	59 212	FAISCEAU CONSIGNE	ANALOG IMPUT WIRE

Index	Désignation	Description
<b>A</b>	PLATINE DE PUISSANCE	POWER CONTROL BOARD
<b>B</b>	TRANSFORMATEUR 9/24V	TRANSFORMER 9/24V
<b>C</b>	FUSIBLE DE FREINAGE	BRAKING CIRCUIT FUSE
<b>D</b>	RELAIS THERMIQUE	THERMAL OVERLOAD RELAY
<b>E</b>	FUSIBLE PRIMAIRE 48V	PRIMARY FUSE 48V
<b>F</b>	CONTACTEUR	CONTACTOR
<b>G</b>	CONTACTEUR	CONTACTOR
<b>H</b>	PONT DE DIODES	TRANSFORMER
<b>I</b>	CARTE DE COMMANDE + TIMER	CONTROL + TIMER BOARD KIT
<b>J</b>	CARTE TIMER V.V.	TIMER V.V. BOARD
<b>K</b>	CARTE DE COMMANDE V.V.	V.V. CONTROL BOARD
<b>L</b>	ENSEMBLE CLAVIER DE COMMANDE	CONTROL PANEL ASSEMBLY

Machine	Voltage	A	B	C	D	E	F
53 331	400/50/3	117 995	503 972S	503 356S	503 376S	503 108S	503 362S
53 334	380/60/3						
53 337	440/60/3						
53 333	220/60/3	117 997	507 200S	502 098S	503 961S	507 206S	503 969S
53 335	230/50/3						
53 339	220/60/3						
53 338	400/50/3	59 245	503 970	-	-	-	-

Machine	Voltage	G	H	I	J	K	L
53 331	400/50/3	503 362S	511 620S	59 482	-	-	59 145
53 334	380/60/3						
53 337	440/60/3						
53 333	220/60/3	503 688 S	511 622S	-	-	-	-
53 335	230/50/3						
53 339	220/60/3						
53 338	400/50/3	-	-	-	59 269	59 270	59 234