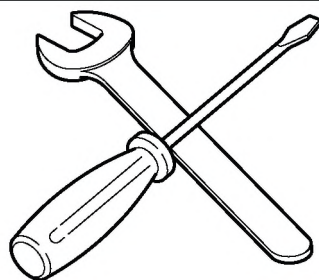
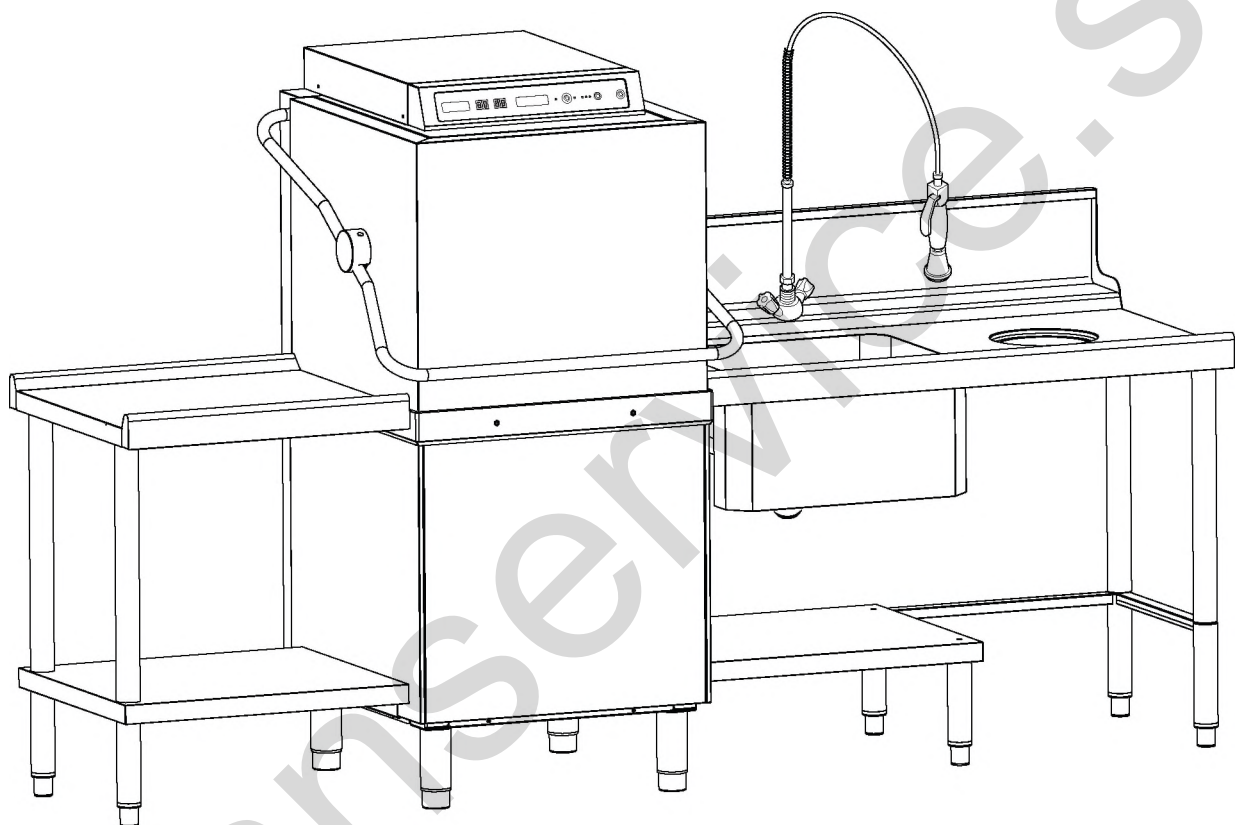
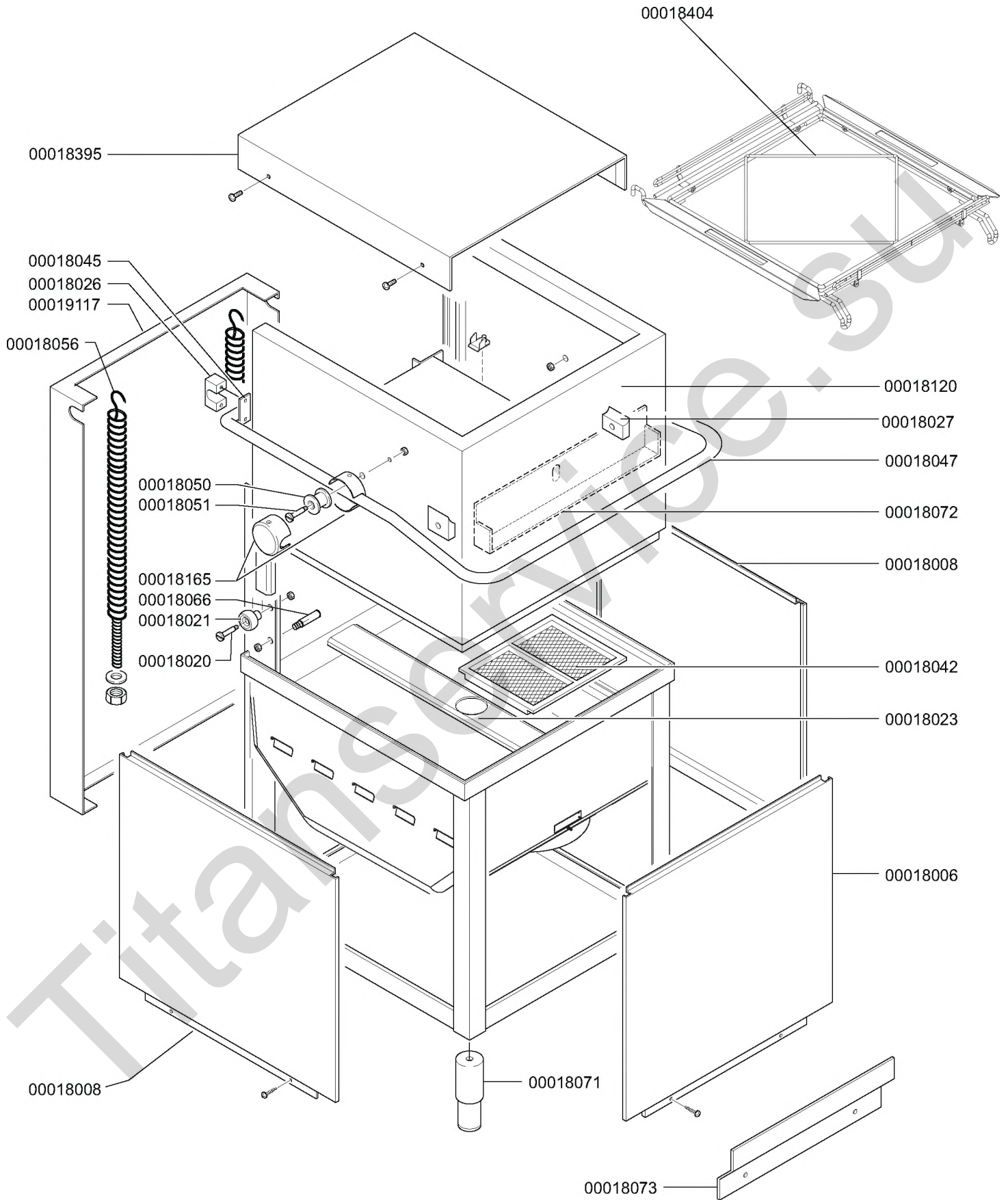


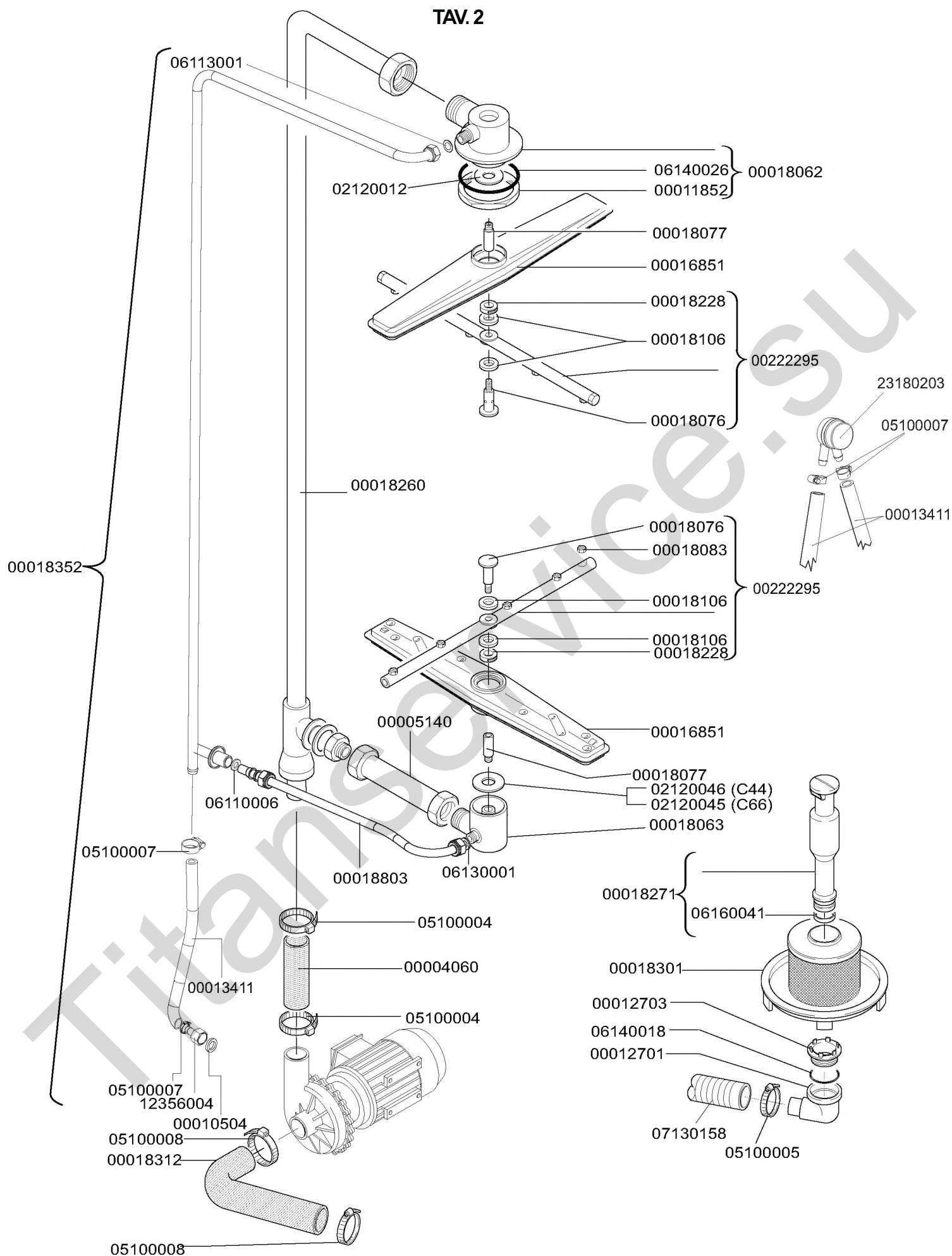
C44dgt - C66dgt



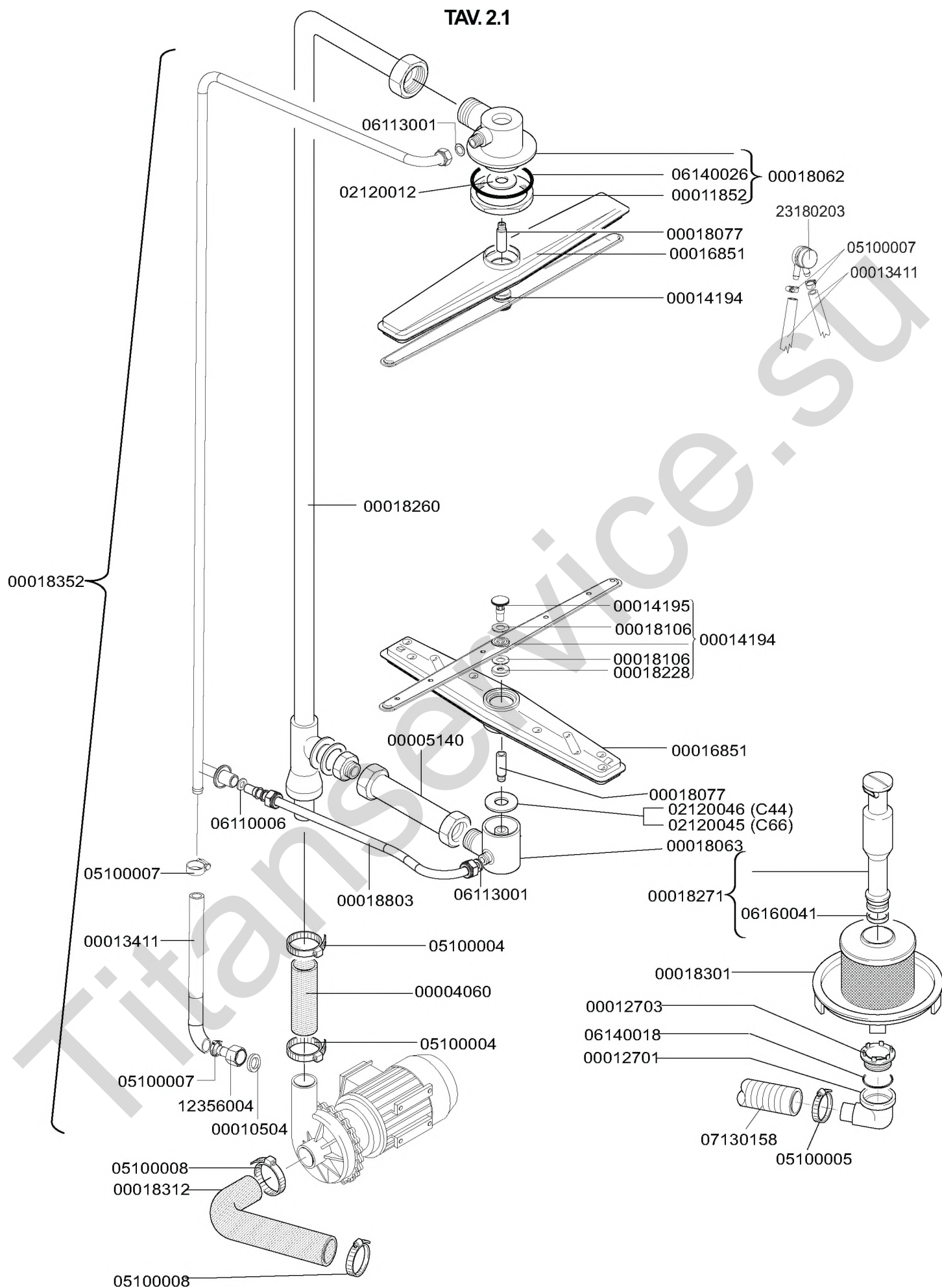
TAV. 1



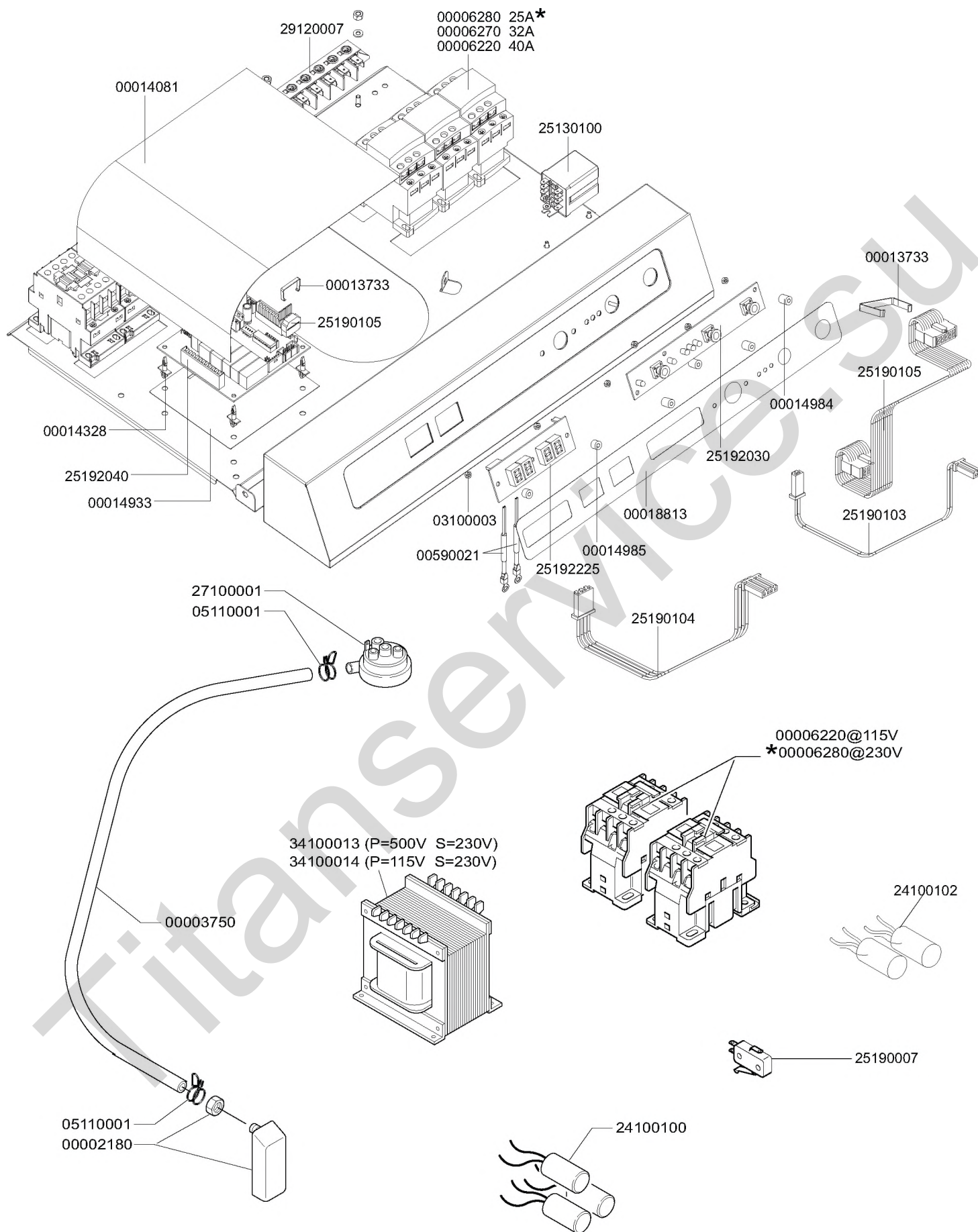
TAV. 2



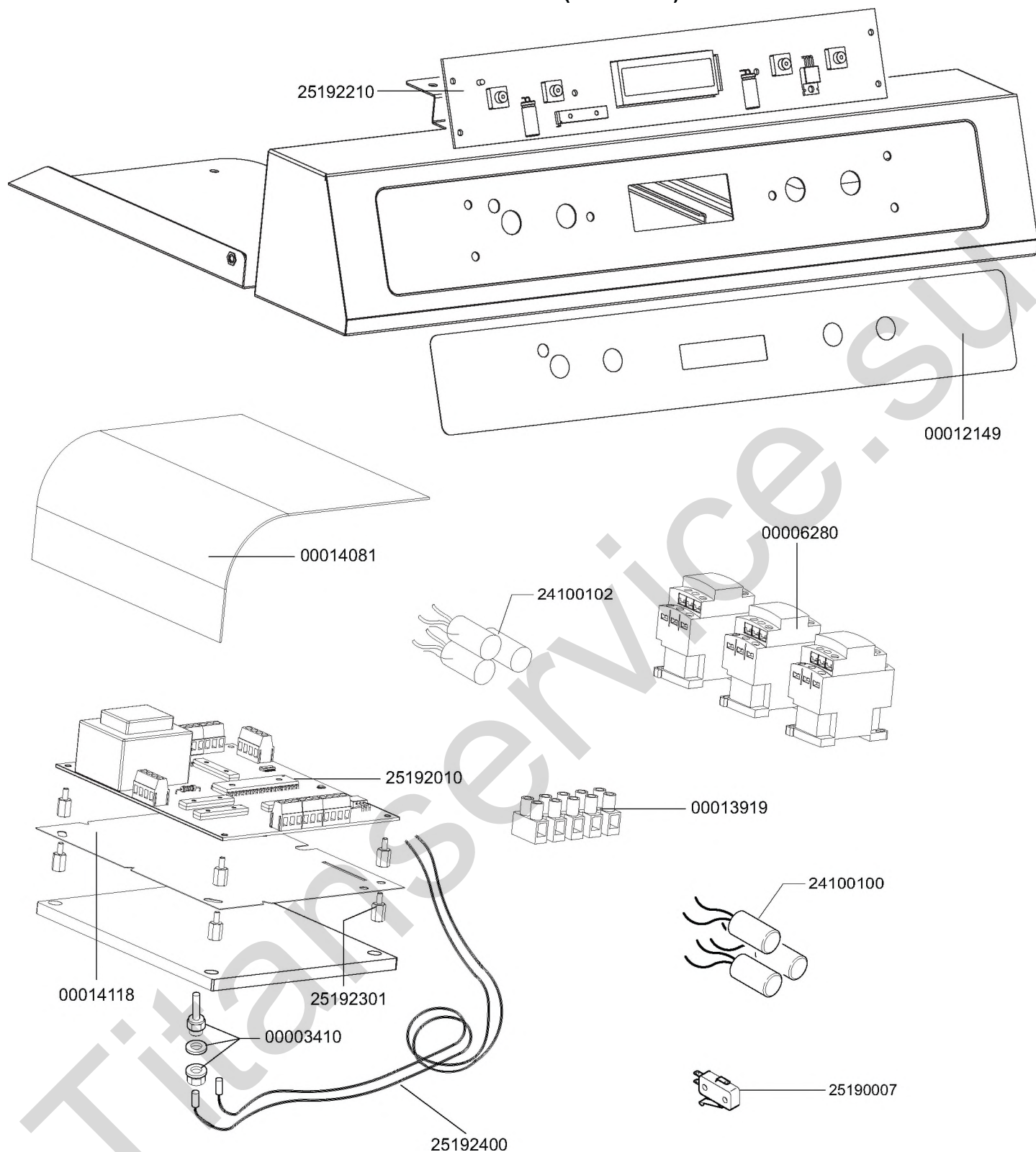
TAV. 2.1



TAV. 3



TAV. 3.1 (ELT BT BA)



TAV. 4

00002410 (Kw5,7@115V)

00003270 (Kw5,2@230V)

■ 00018070 (Kw3@230V)

00057151

A A

22180004

22100002

00013411

05100007

23120021

07130002

00010500

00010504
00010502
00003430

00003327 (Kw6,1@240V)C44■

00003325 (Kw5,2@230V)

00003334 (Kw9 @240V)C66▲

00002441 (Kw5,7@115V)

00003349 (Kw9,8@ 230V)

00003461 (Kw5,7@ 254V)

00003420

06112001

00220440

00003750

20155108

00003111

00003750

00011058

00011059

DAA020

00220423

20155114

00210510

20155112

00210510

00011058

00011059

20155111

20155109

20155104

00003750

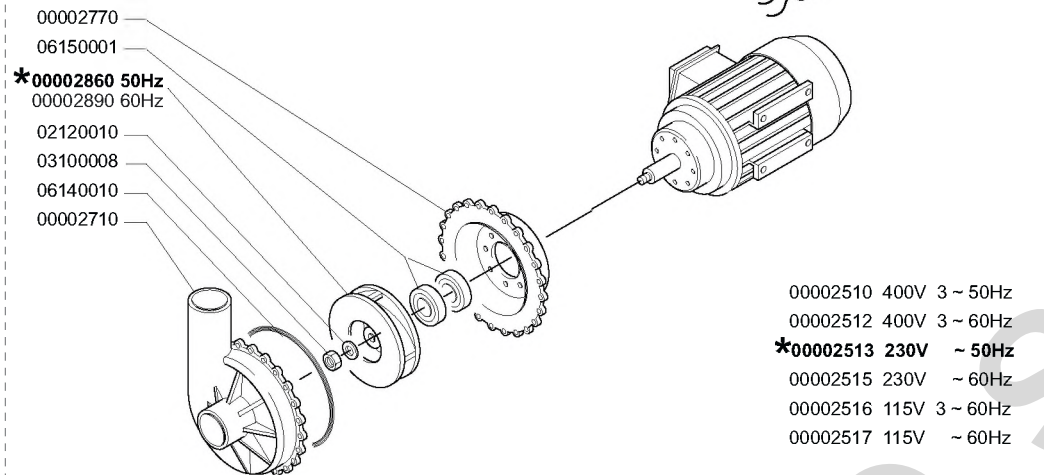
00011058

00011059

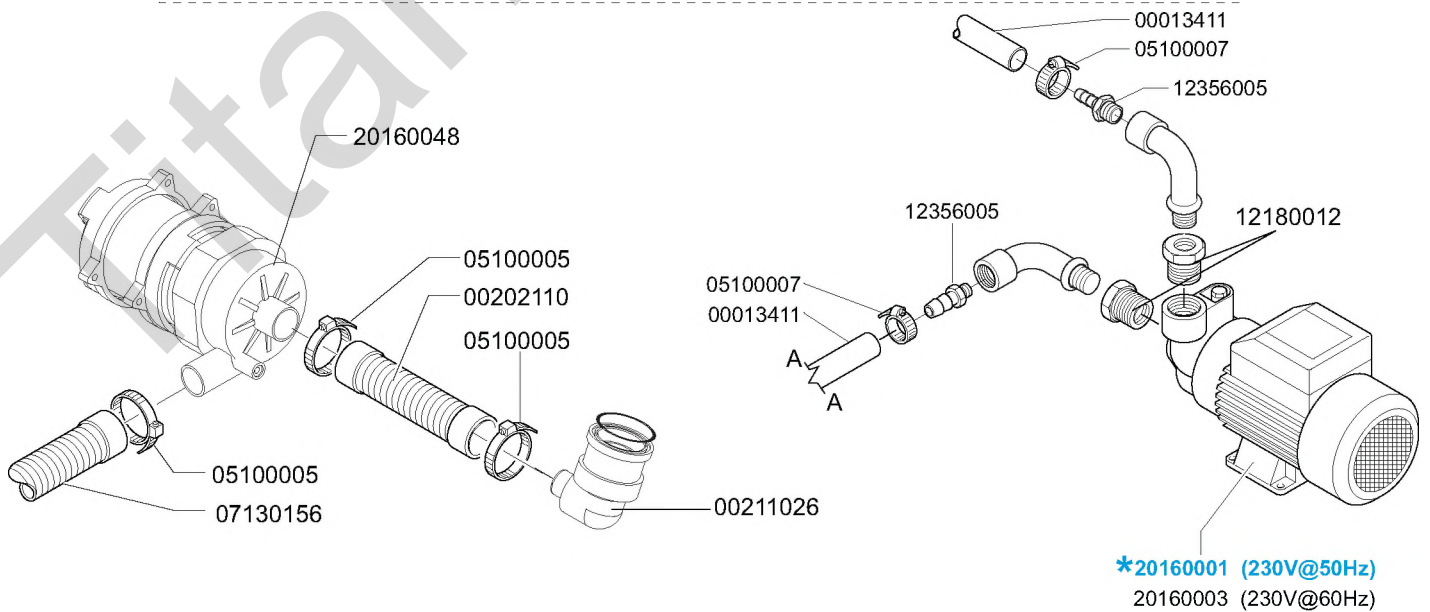
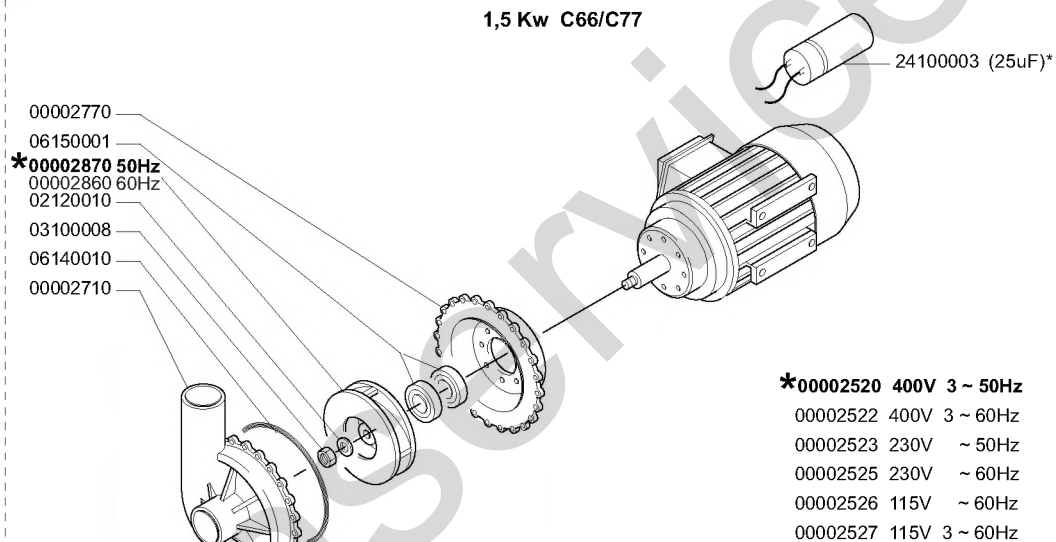
00220419

TAV. 5

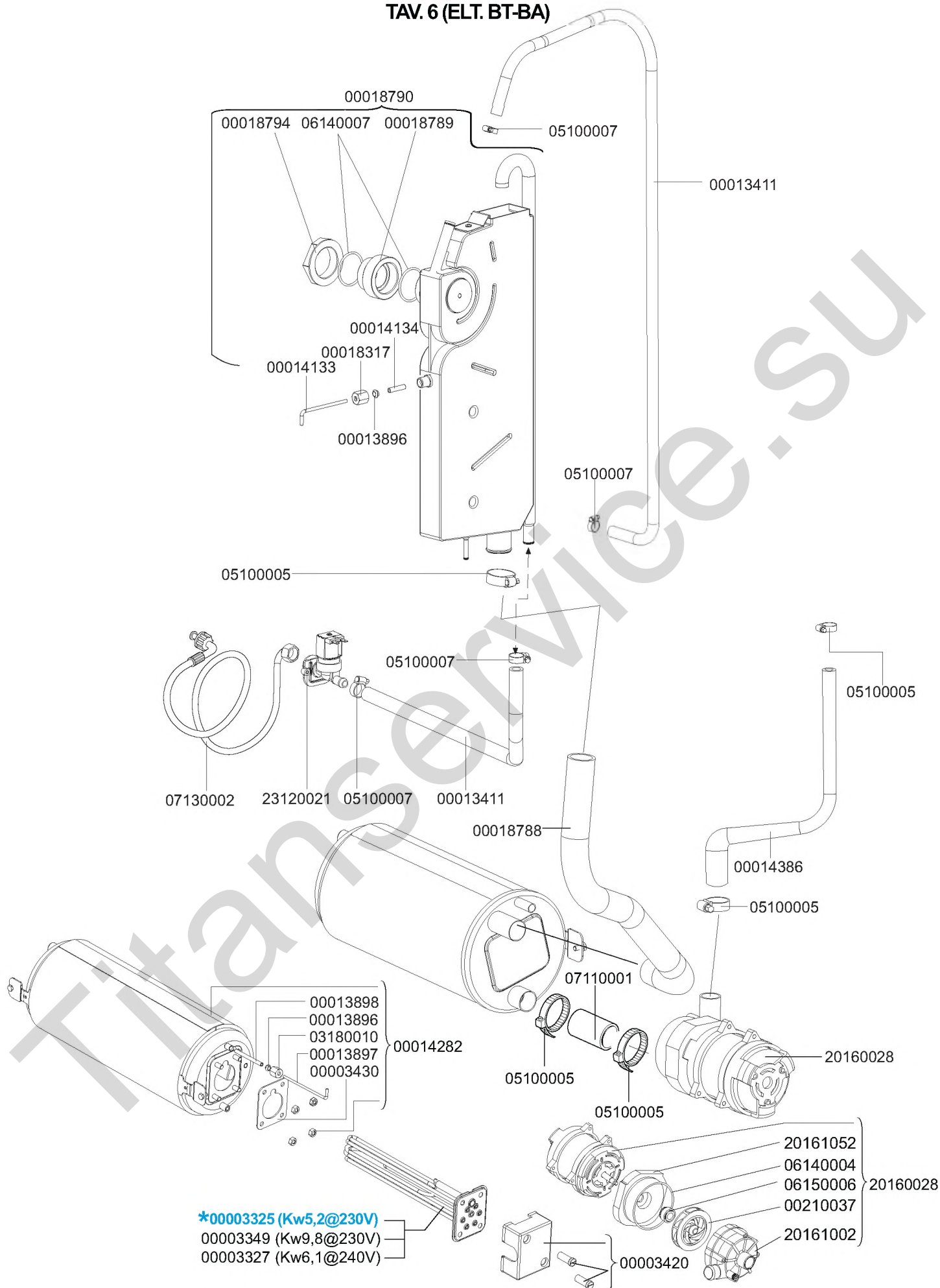
1 Kw C44



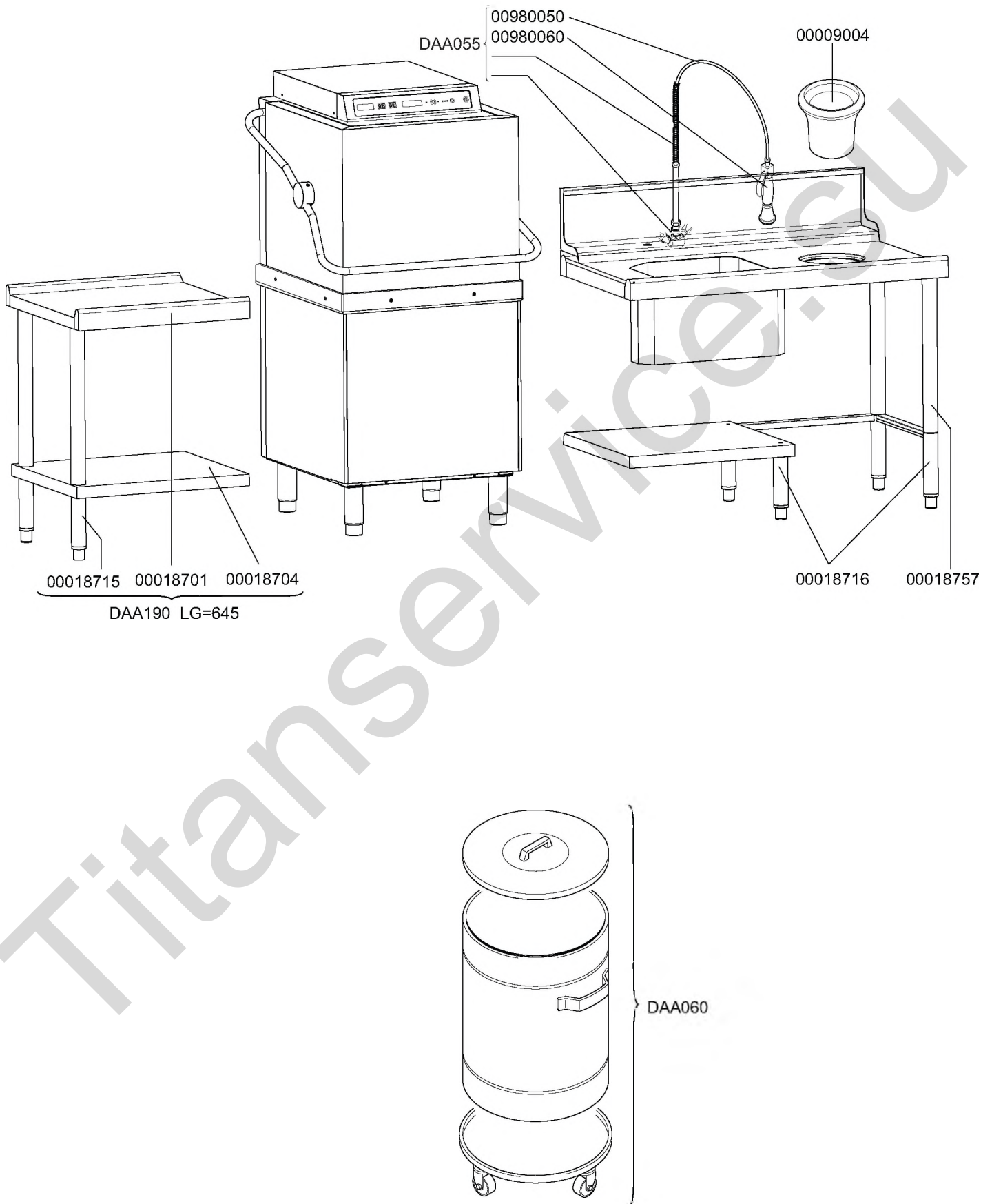
1,5 Kw C66/C77



TAV. 6 (ELT. BT-BA)

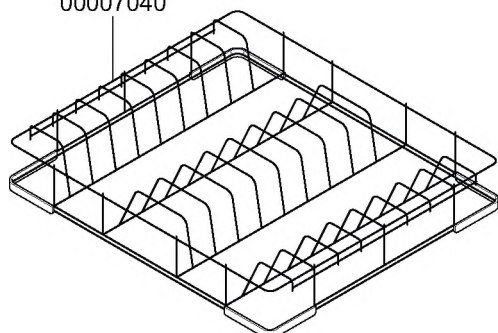


TAV. 7

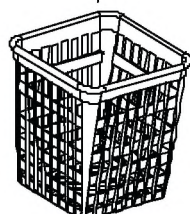


TAV. 8

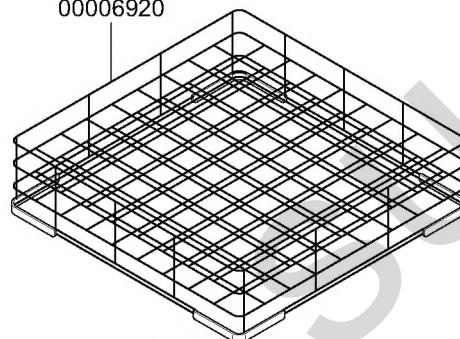
00007040



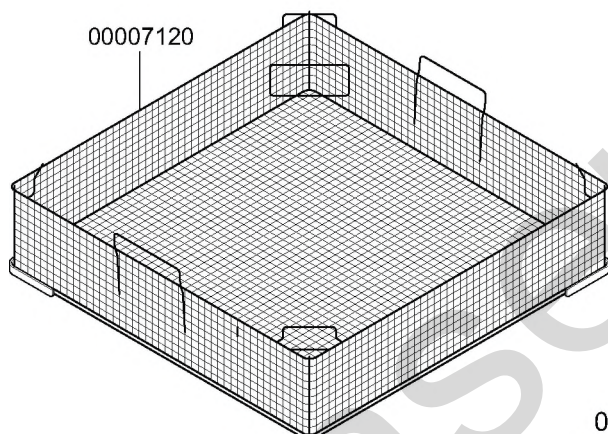
00206721



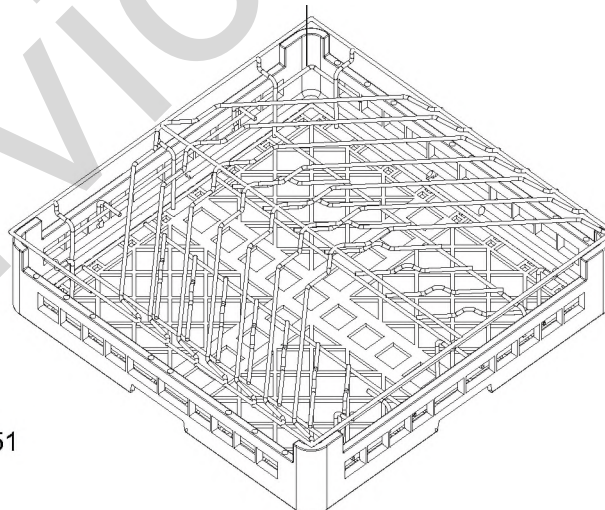
00006920



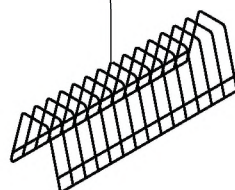
00007120



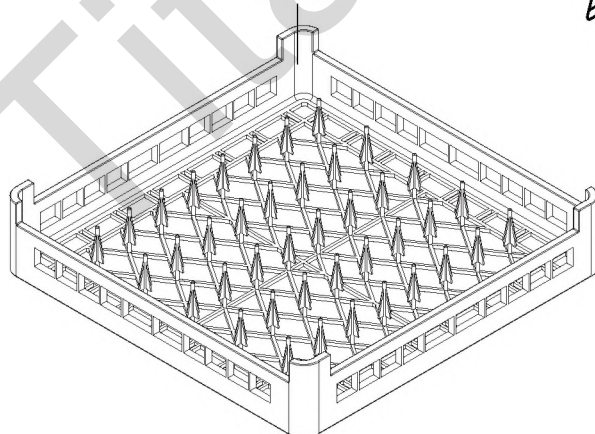
FAA031



00206751



FAA007



FAA001

