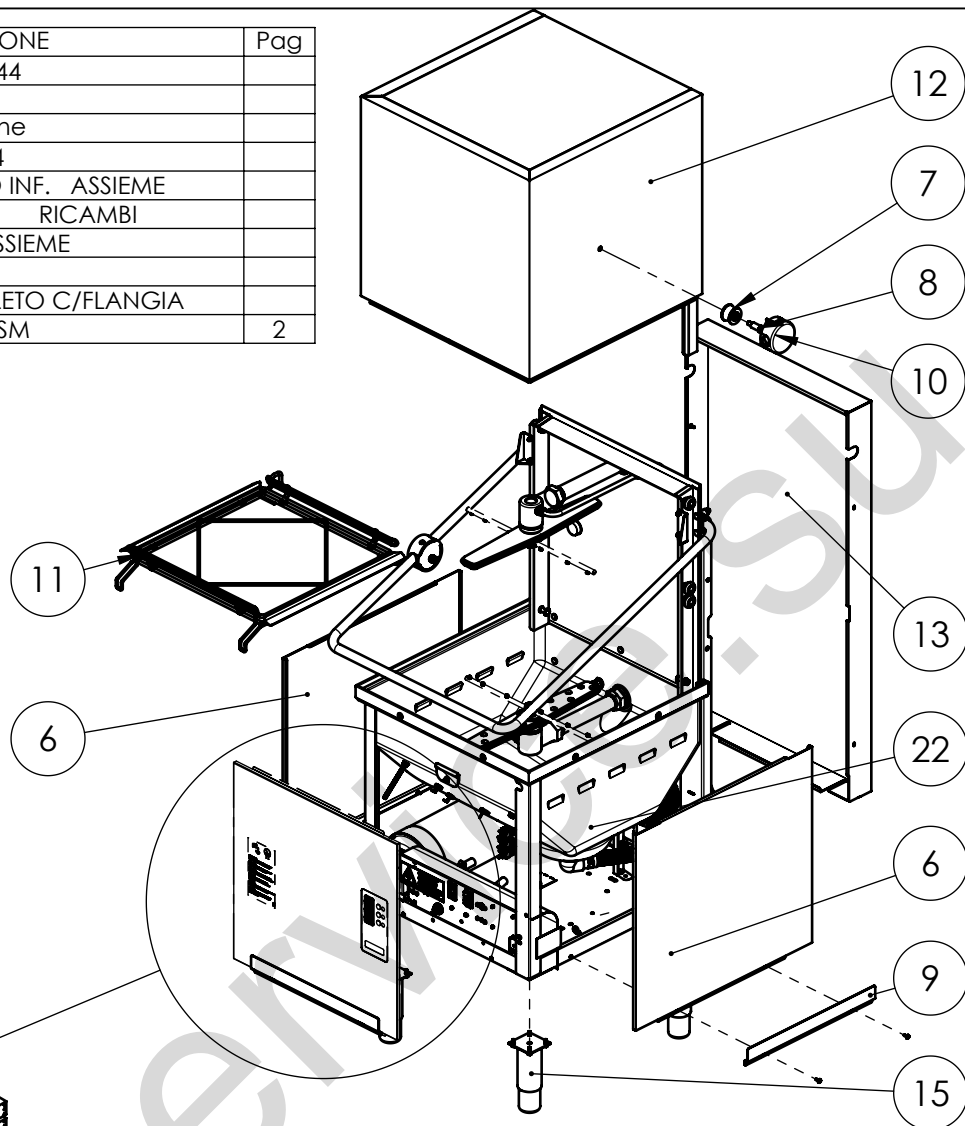
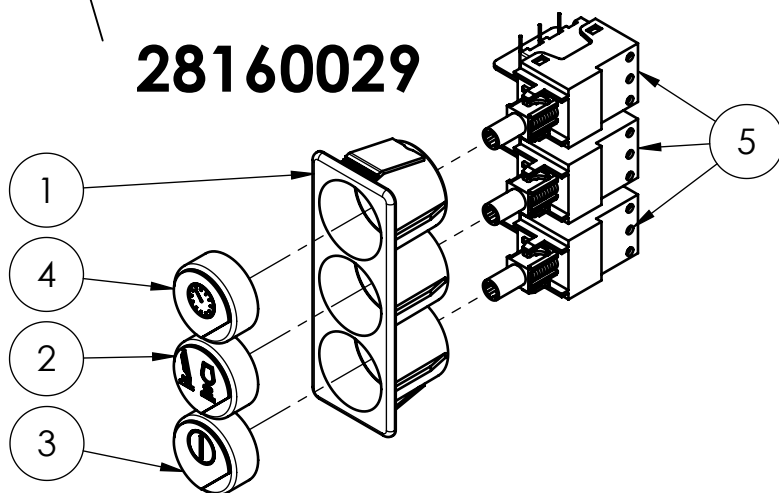


Pos.	Codice	DESCRIZIONE	Pag
6	00018008	PANNELLO TELAIO LAT. C44	
7	00018050	RUOTA MANIGLIONE C	
8	00018051	Perno per ruota maniglione	
9	00018073	AGGANCIO RIPIANO C44	
10	00018165	SUPPORTO + COPERCHIO INF. ASSIEME	
11	00018404	PORTACESTELLO C44/66 RICAMBI	
12	00019514	CAPOT CE24 ASSIEME	
13	00019523	PANNELLO POST. CE24	
15	00079402	PIEDINO 2" H=140 COMPLETO C/FLANGIA	
22	C5111010_0	GRUPPO MONTAGGIO ASM	2

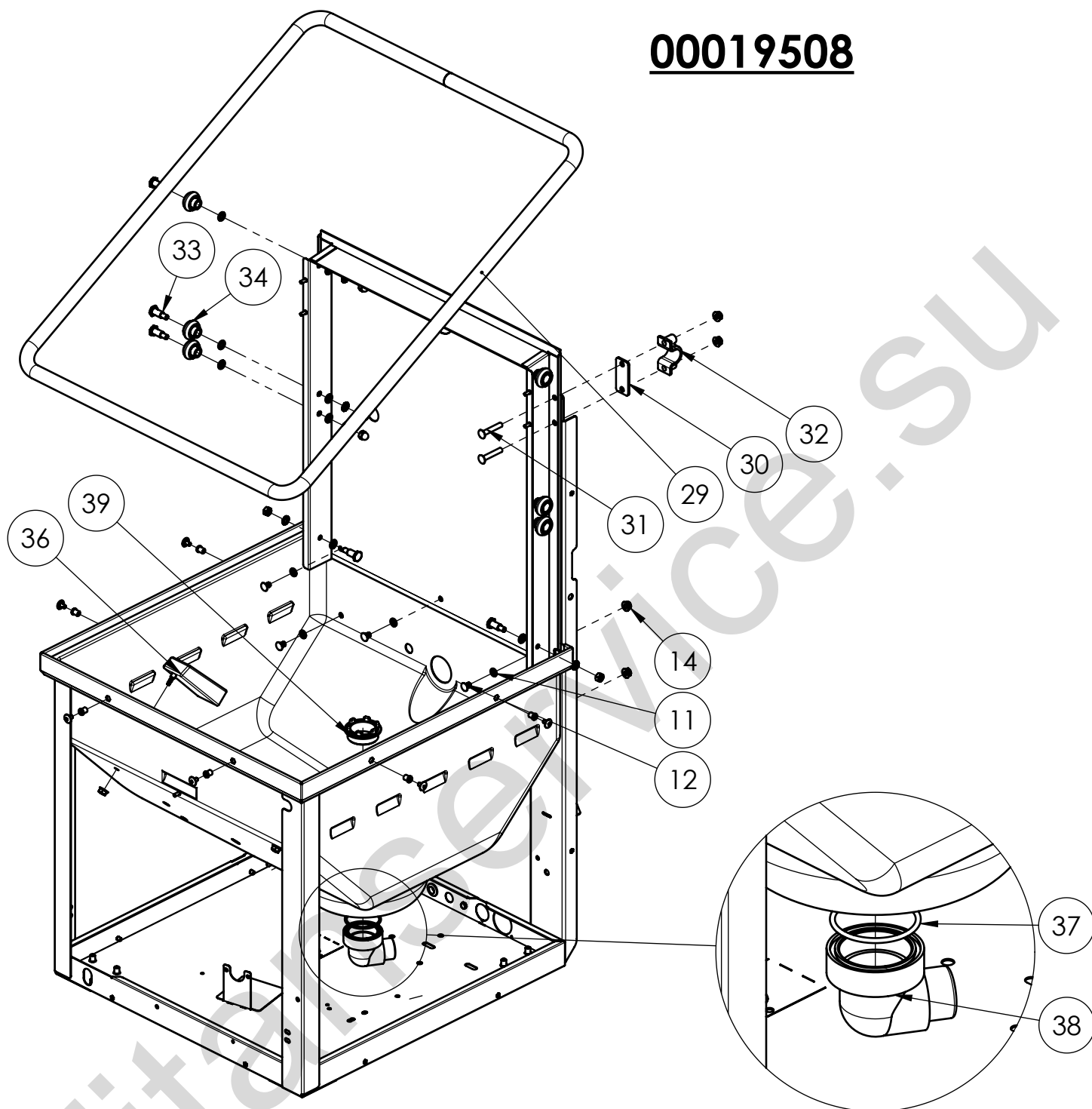


Pos.	Codice	DESCRIZIONE
1	00019526	PANNELLO TELAIO ANT. CE24
3	00019501	TARGA QUADRO CE24 BLU PANT 2746
4	28100011	SPIA GIALLA NYLON LED FM6,3 250V
5	28160029	PULSANTE DOMINO 3POS. D40 C/PS

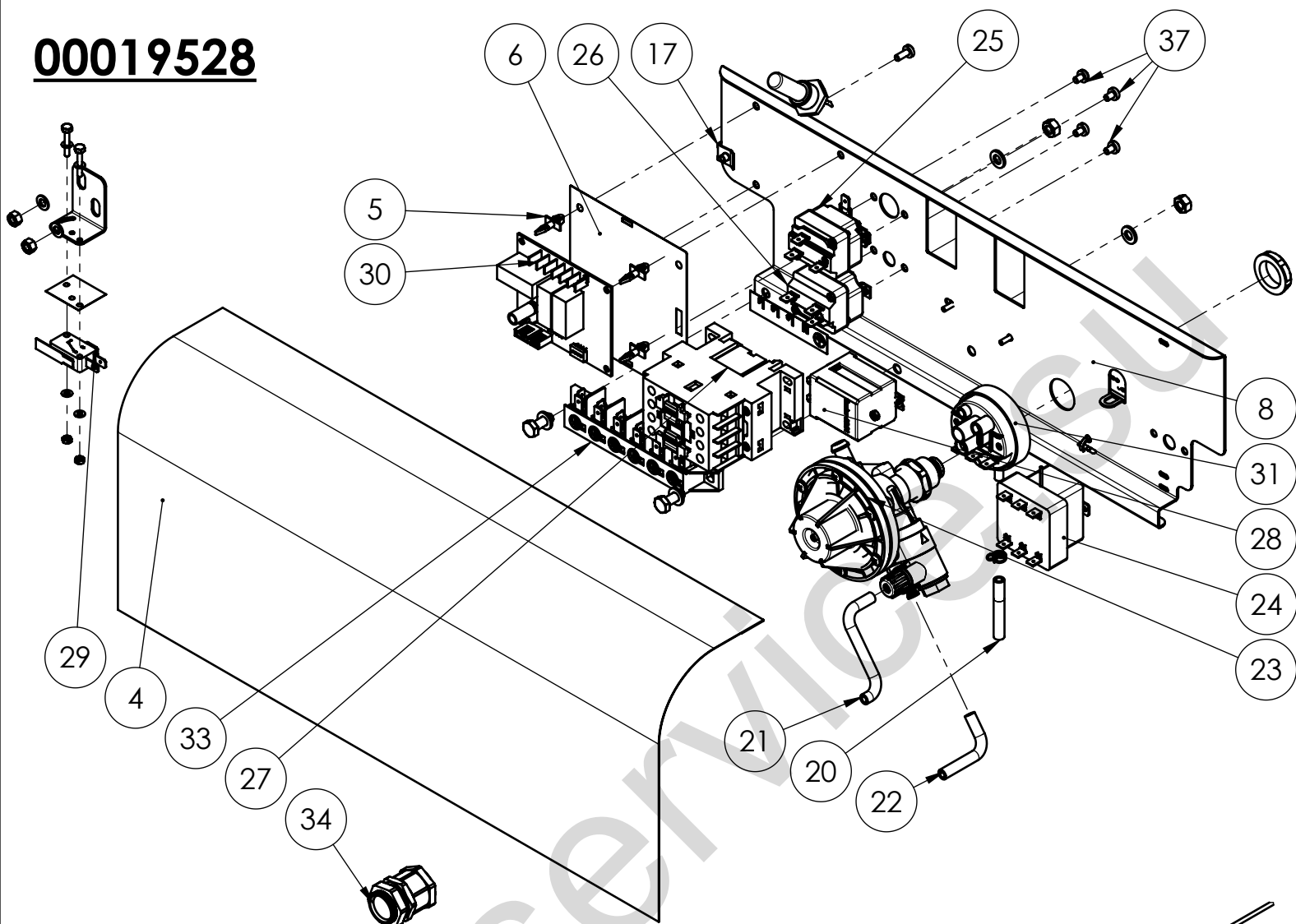
28160029



Pos.	Codice	DESCRIZIONE
1	28160199	Supporto pulsante 3 posizioni
2	28160203	Puls. scelta ciclo
3	28160213	Tasto ON/OFF s/z finestra
4	28160214	Tasto partenza ciclo
5	28160275	INTERRUTTORE CM DEV/DEV 45°

00019508

Pos.	Codice	DESCRIZIONE
11	06120001	GUARNIZIONE 8,5X14,5X2 FASIT-OMNIA
12	01160017	Vite TC A2 M8x12 Testa larga
14	03150008	DADO ESFR ACC M8 ZN ZIGRIN.DIN 6923
29	00018661	MANIGLIONE SOLLEVAMENTO C44 DIRITTO
30	00018045	BRONZINA SCORRIMENTO PIATTA
31	01160018	VITE TC A2 M 8X47 TESTA LARGA
32	00018026	Fulcro per maniglione
33	00018020	Perno per ruota
34	00018021	RUOTA CAPOT C
36	00002180	CAMPANA PRESSOSTATO RICAMBI
37	06140018	ANELLO OR 4225 3,53X 56,74 NBR 70SH
38	00012701	GOMITO PILETTA TUBO SC. D=37
39	00012703	PILETTA SCARICO CILINDRICA C/PIOLI

00019528

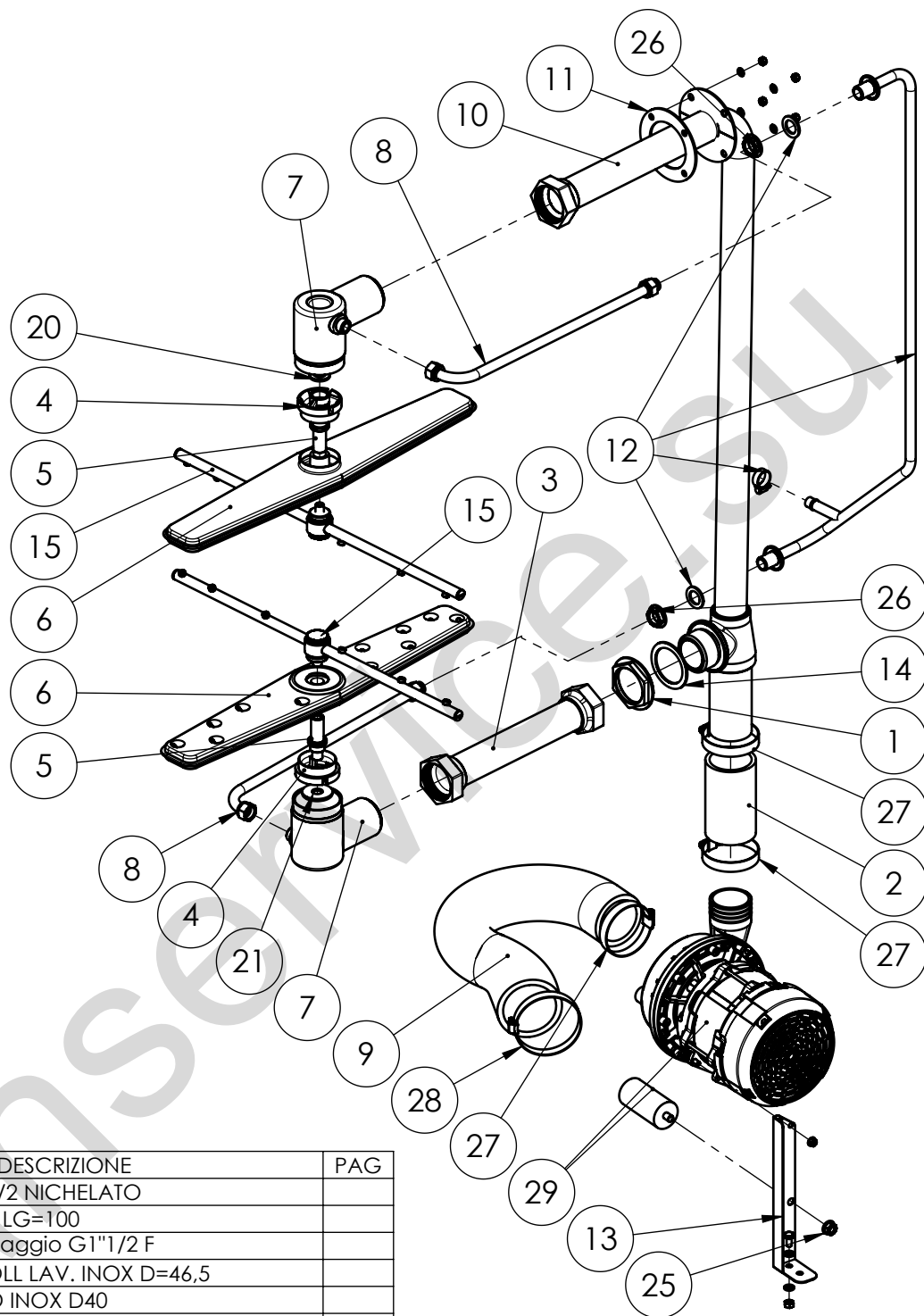
Pos.	Codice	DESCRIZIONE	LG[m]
4	00014081	PROTEZIONE QUADRO D80	
5	00014328	AGGANCIO SCHEDA H=8	
6	00014933	ISOLANTE SCHEDA PROGRAMMATTORE DGT	
8	00019529	CASSA QUADRO CE24	
17	04105001	Molletta collare imbutito Zn M4	
20	07125002	TUBO SILICONE D= 4X 7 60 SH.	1
21	07125002	TUBO SILICONE D= 4X 7 60 SH.	2
22	07125002	TUBO SILICONE D= 4X 7 60 SH.	0.4
23	20155117	POMPA DOSATORE BRILL. IDR SEKO DIB5	
24	22100002	Termostato tripolare sicurezza boiler 20A	
25	22180004	TERMOSTATO UNIPOLARE REG. 25/93 C	
26	22180007	TERMOSTATO UNIPOLARE FISSO 60 C	
27	25130037	CONTATTORE BF0901 LOVATO 230V	
28	25130100	RELE' MICRO PORTA 20A 230V	
29	25190007	MICROINTERRUTTORE DEVIATORE S16	
30	25192042	SCHEDA ELETTRONICA	
31	27100001	PRESSOSTATO 60/20	
33	29120008	Morsettiera FV122	
34	30160003	PRESSACAVO PG 16 UL-VDE RAL 7035	
37	01160008	Vite TC A2 M 4 x 5 UNI 7687	
38	----	VITE TC+ACC M4x5 UNI 7687	

30100002 @400V/3/N

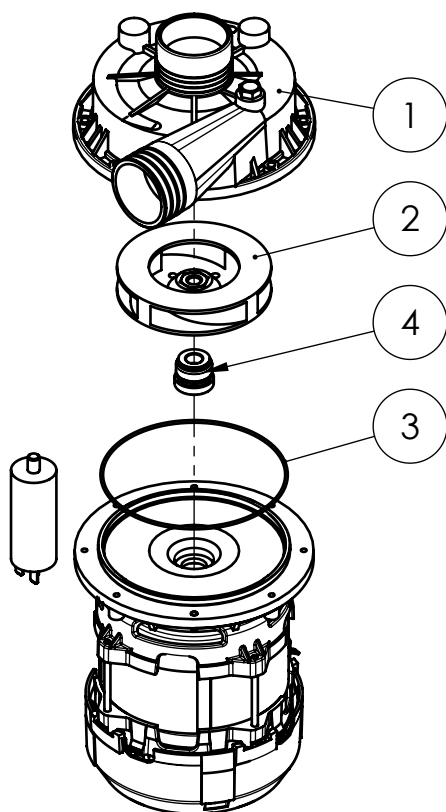
30100003 @400V/3/N

30100008 @230V/3

30100001 @230V/1/N

C5111010 3

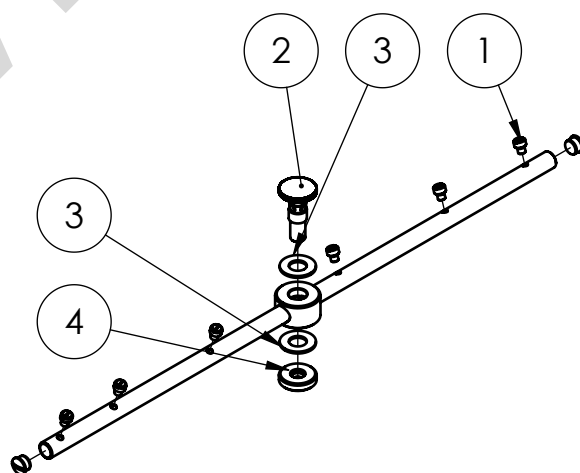
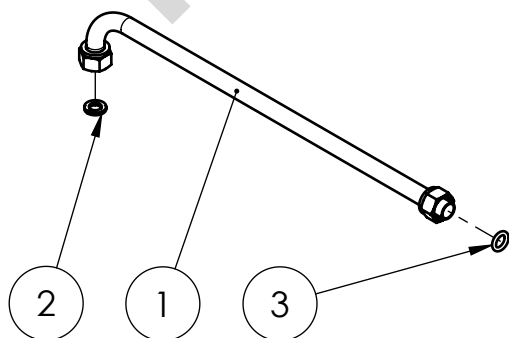
Pos.	Codice	DESCRIZIONE	PAG
1	00003875	DADO ESFR OT 1"1/2 NICHELATO	
2	00004060	MANICOTTO D=50 LG=100	
3	00005140	Tubo raccordo lavaggio G1"1/2 F	
4	00014041	RIDUZIONE SUP COLL LAV. INOX D=46,5	
5	00014042	PERNO LAVAGGIO INOX D40	
6	00014048	COLLETTORE LAV. D80 LG=485 RICAMBI	
7	00018063	COLLETTORE FISSO 1"1/2 INF.	
8	00018803	TUBO RISC. INF. C44 INOX RICAMBI	6
9	00019136	MANICOTTO ASPIRANTE C34-C44	
10	00019502	COLONNA LAVAGGIO CE24 ASSIEME	
11	00019505	GUARNIZIONE SUP. COLONNA LAV.	
12	00019530	COLONNA RISCIAQUO CE24 RICAMBI	7
13	00019537	SUPPORTO POMPA C34/CE24	
14	00053500	GUARNIZIONE GOMMA 45,0X59,0X2 1"1/2	
15	00222295	GRUPPO RISCIAQUO INOX BD22 RICAMBI	6
20	02120012	Rosetta M12 UNI6592	
21	02120040	ROSETTA A2 M12X36X3 UNI 6593	
25	03150008	DADO ESFR ACC M8 ZN ZIGRIN.DIN 6923	
26	03160004	DADO ESFR OT 3/8" NICHELATO	
27	05100004	FASCETTA FE ZN D=50 65	
28	05100008	Fascetta FE ZN D=68-85	
29	20160053	ELETTOPOMPA K0875-K0 082 50HZ 230V	6

**20160053**

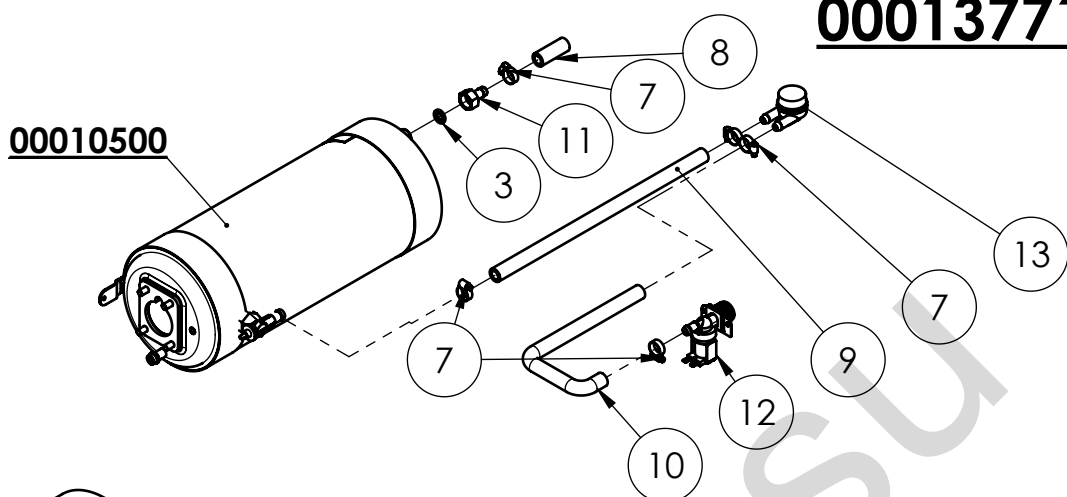
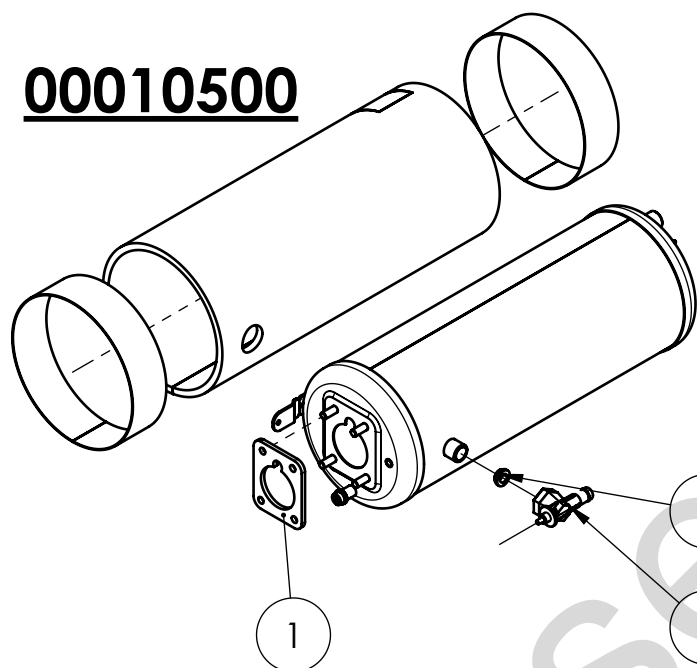
Pos.	Codice	DESCRIZIONE
1	00019540	CHIOCCIOLA ELETTR. ZF400 20160053
2	00019541	GIRANTE POMPA ZF400 50HZ 20160053
3	00019542	GUARNIZIONE POMPA ZF400 20160053
4	06150011	TENUTA MECCANICA ZF400 20160053

00222295

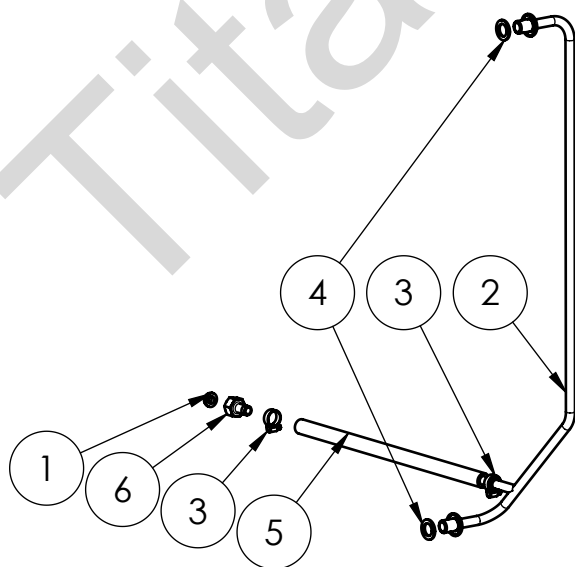
Pos.	Codice	DESCRIZIONE
1	00014555	UGELLO RISCIAQUO D1.9
2	00018076	PERNO DI BLOCCAGGIO
3	00018106	RONDELLA ANTIFRIZIONE RISCIAQUO
4	00018228	Piattello filettato

**00018803**

Pos.	Codice	DESCRIZIONE
1	00018836	TUBO RISC. INF. C44 INOX ASSIEME
2	06120001	GUARNIZIONE 8,5X14,5X2 FASIT-OMNIA
3	06140138	ANELLO OR 109 2,62X 9,13 NBR 70SH

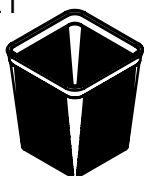
00013771**00010500****00010500**

Pos.	Codice	LG [m]	DESCRIZIONE
1	00003430		GUARNIZIONE RESISTENZA
3	00010504		GUARNIZIONE CODOLO BOILER
4	00010504		GUARNIZIONE CODOLO BOILER
5	00010514		RACCORDO BOILER/POMPA BRILL. M10
7	05100007		FASCETTA FE ZN D=12/20
8	07145011	0.51	TUBO GOMMA ALIMENTARE D=12X19,5
9	07145011	1.25	TUBO GOMMA ALIMENTARE D=12X19,5
10	07145011	1.25	TUBO GOMMA ALIMENTARE D=12X19,5
11	12356004		Portagomma inox 303 G 1/2F d.12
12	23120021		ELETTROVALVOLA 1VIA C/RID 10LT 230V
13	23180203		Valvola anti inquinamento

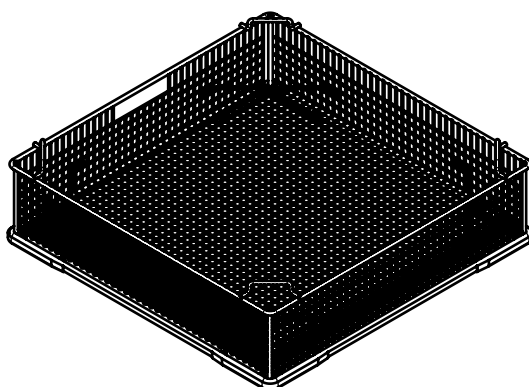
00019530

Pos.	Codice	DESCRIZIONE
1	00010504	GUARNIZIONE CODOLO BOILER
2	00019503	COLONNA RISCIAQUO CE24 ASSIEME
3	05100007	FASCETTA FE ZN D=12/20
4	06120004	GUARNIZIONE 17,0X27,0X2 FASIT-OMNIA
5	07145011	TUBO GOMMA ALIMENTARE D=12X19,5
6	12356004	Portagomma inox 303 G 1/2F d.12

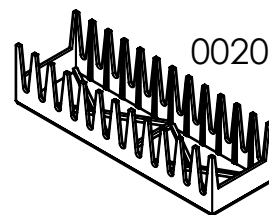
00206721



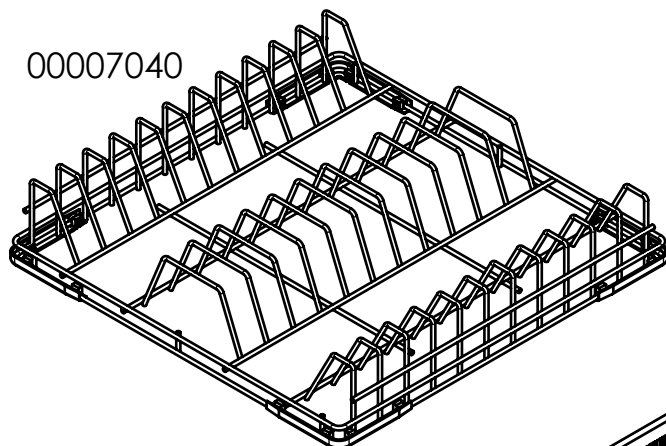
00007120



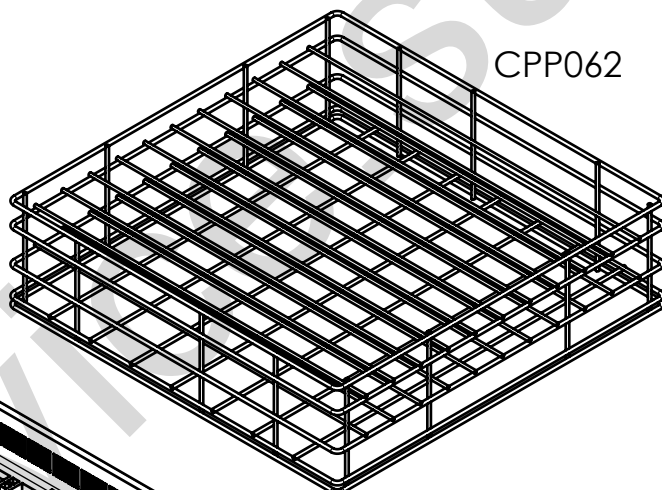
00206751



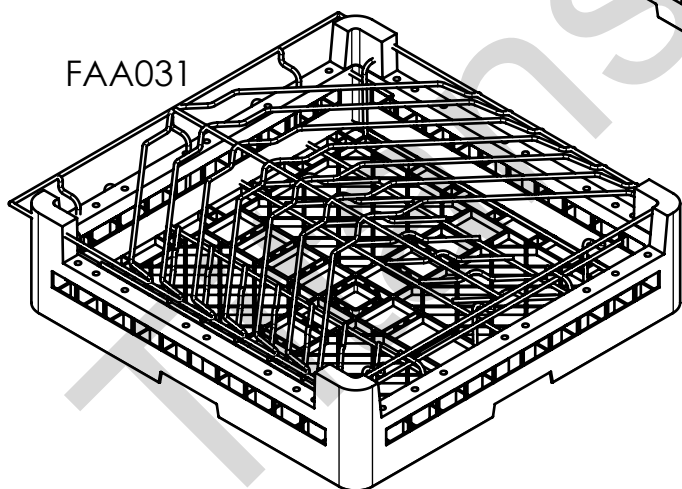
00007040



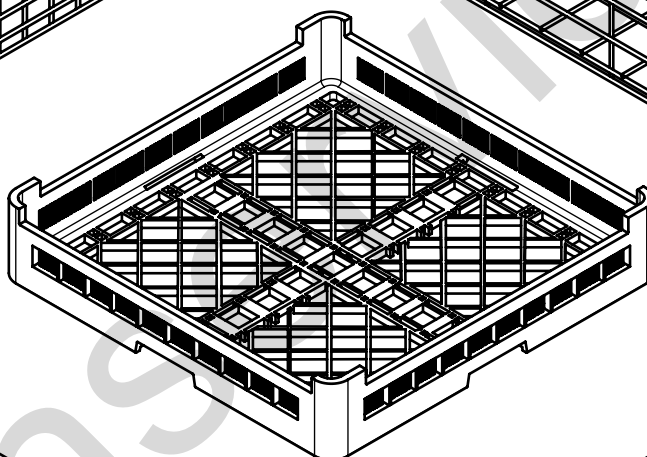
CPP062



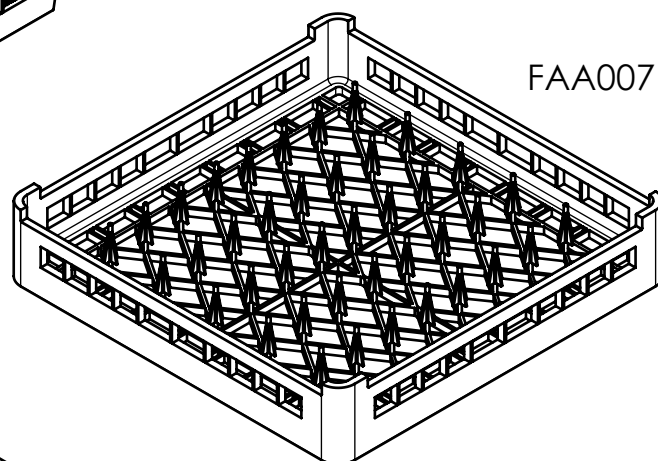
FAA031



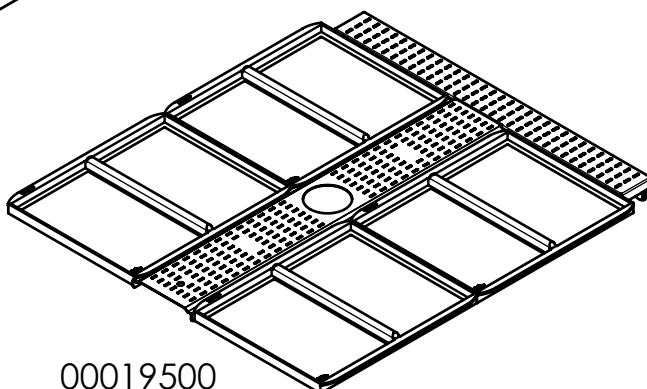
FAA001

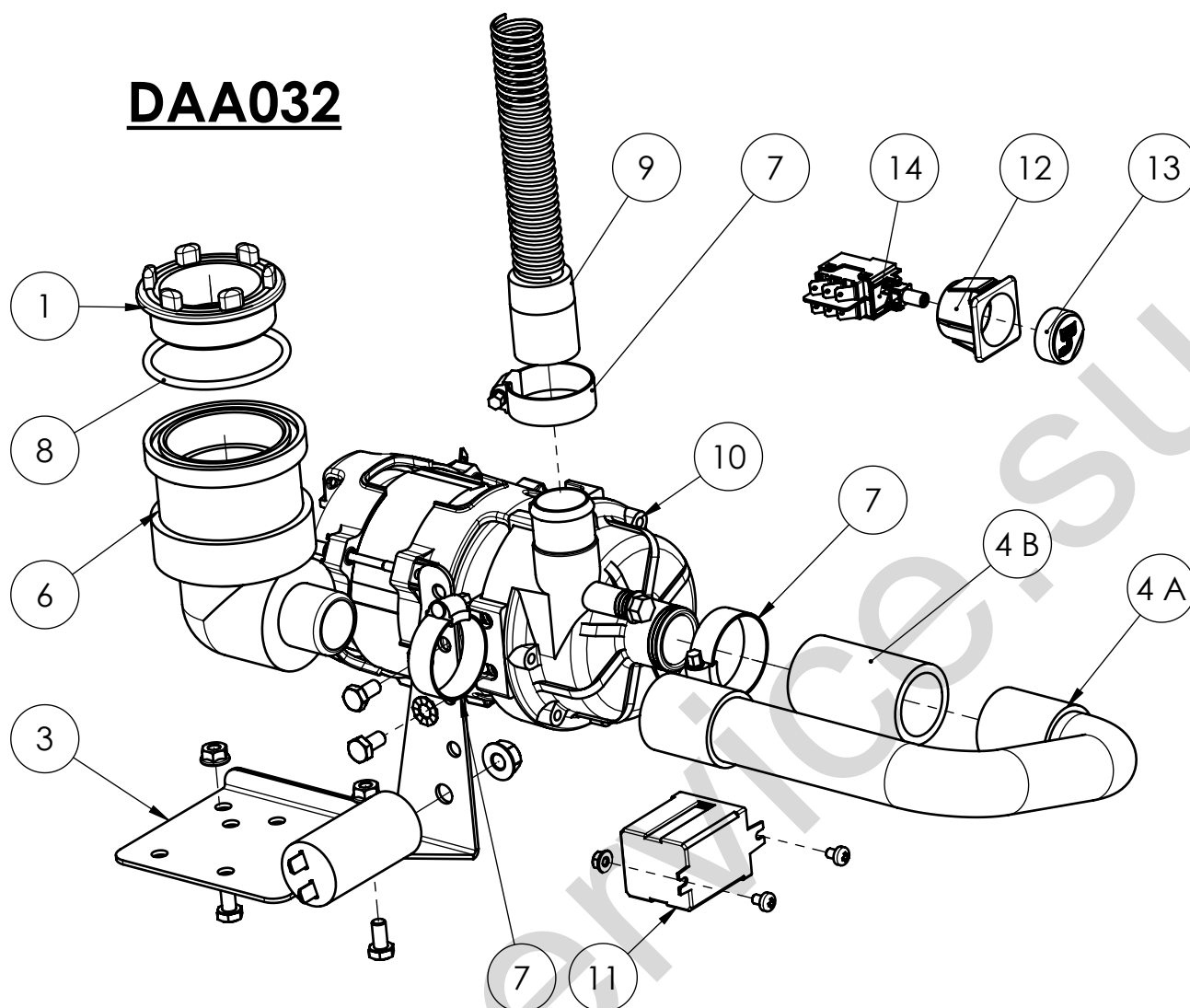


FAA007

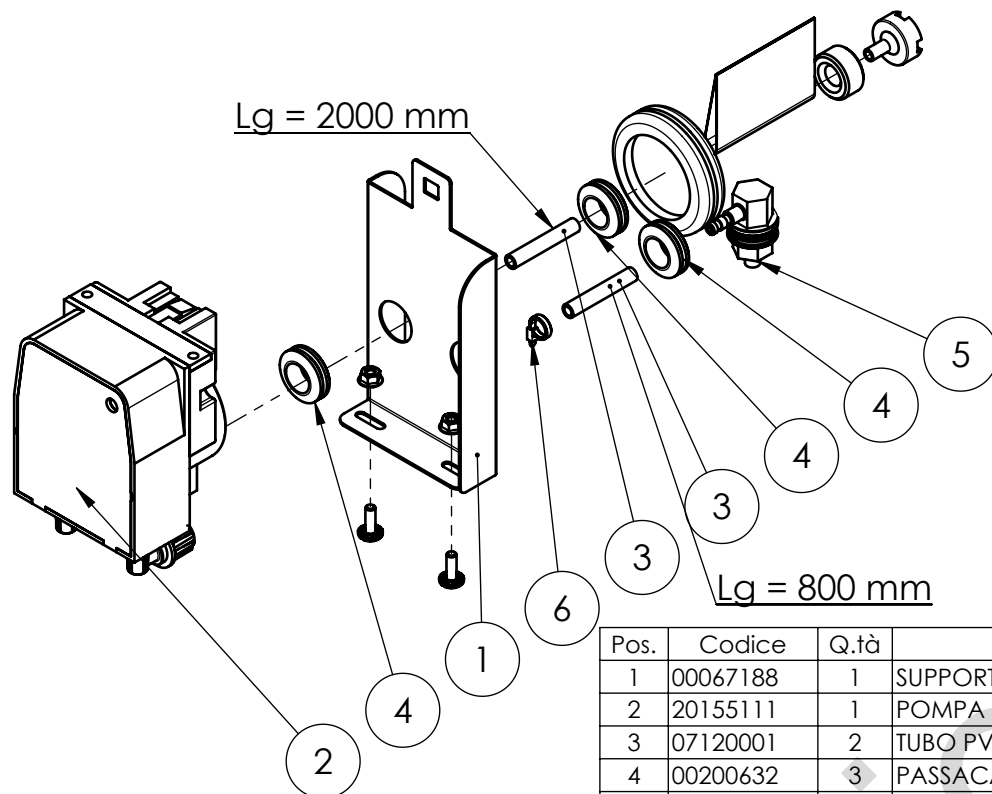


00019500

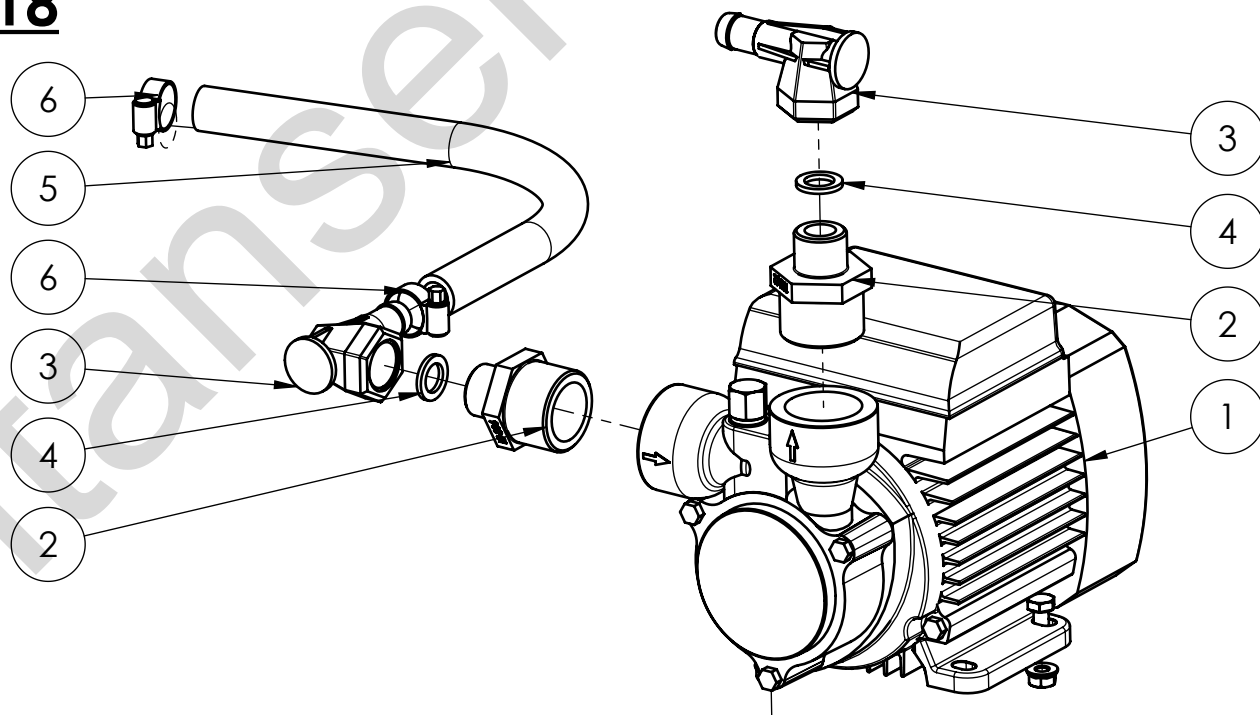


DAA032

Pos.	Codice	Q.tà	DESCRIZIONE
1	00012703	1	PILETTA SCARICO CILINDRICA C/PIOLI
2	00019544	1	CABLAGGIO CE24 PS
3	00065419	1	SUPPORTO POMPA SCAR. LP
4 A	00202110	1	TUBO RACCORDO SCARICO LG=330
4 B	07110001	0,06	TUBO RADIATORE 28X36
6	00211026	1	Gomito di scarico
7	05100005	3	FASCETTA FE ZN D=26/40
8	06140018	1	ANELLO OR 4225 3,53X 56,74 NBR 70SH
9	07130156	1	Tubo scarico
10	20160048	1	ELETTROPOMPA SCAR.LAV. 50-60HZ 230V
11	25130100	1	RELE' MICRO PORTA 20A 230V
12	28160198	1	SUPPORTO PULSANTE 1 POS.
13	28160202	1	Puls.scarico vasca grigio
14	28160276	1	PULSANTE CM DEV/DEV F45°

**DAB396**

Pos.	Codice	Q.tà	DESCRIZIONE	Rev.
1	00067188	1	SUPPORTO DOSATORE LP61	3.00
2	20155111	1	POMPA DOSATORE DETER. PER SEKO 200V	2.02
3	07120001	2	TUBO PVC CRISTALLO ROSSO D= 4X 6	1.00
4	00200632	3	PASSACAVO 23X13,0X18X2,0X8	0.01
5	20155114	1	Raccordo detersivo	0.01
6	05140001	1	FASCETTA NYLON 2,5X 95	0.02
10	00510002	1	TAPPO PASSACAVO 4379.CA10	0

DAA018

Pos.	Codice	Q.tà	DESCRIZIONE	Rev.
1	20160054	1	ELETTROPOMPA KW0,37 50HZ MON 230V	0.01
2	12545206	2	RIDUZIONE INOX 316 M1" M1/2"	0.00
3	00014169	2	RACCORDO ANGOLO PORTAGOMMA F1/2"	1.00
4	06120005	2	GUARNIZIONE 12,0X18,5X2 FASIT-OMNIA	2.00
5	07145011	0.9	Tubo gomma d.12X18 LG=1200	2.02
6	05100007	2	FASCETTA FE ZN D=12/20	0.01